



**LIGHT^{MY}
BRICKS**



**LEGO LION KNIGHTS' CASTLE #10305
LIGHT KIT
INSTALLATION GUIDE**

Light My Bricks



LEGO THE LION KNIGHTS' CASTLE 10305 INSTALLATION GUIDE

Hi There!

We're here to help you get started on the LEGO
The Lion Knights' Castle 10305 Light Kit.

This PDF details the instructions for the LED light kit only.

If you run into any issues, please refer to the
troubleshoot-ing section towards the end of this guide.

Have fun and enjoy!

INSTALLATION GUIDE





PACKAGE CONTENTS:



- 1 x White 30cm Bit Light
- 2 x Yellow 30cm Bit Light
- 2 x Blue 30cm Bit Light
- 13 x Orange 30cm Bit Light *
- 3 x Warm White 30cm Large Bit Light
- 9 x Orange 30cm Large Bit Light *



- 2 x 2-Port Expansion Board
- 9 x 6-Port Expansion Board *
- 4 x Flicker Effects Board



- 6 x 5cm Connecting Cable
- 1 x 15cm Connecting Cable
- 3 x 30cm Connecting Cable
- 5 x 50cm Connecting Cable *



- 1 x USB Power Cable
- 14 x Adhesive Squares

ASSORTED BRICKS:



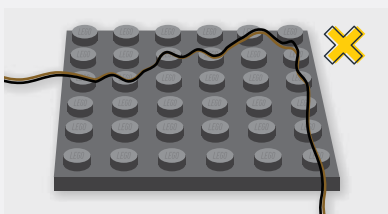
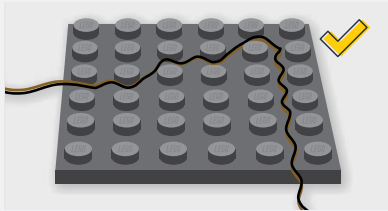
- 30 x Round Plate 1x1 w/ Open Stud - Black *
- 1 x Candle Flame
- 2 x Round Plate 1x1 - Trans Orange
- 4 x Round Plate 2x2 w/ Rounded Bottom - Trans Clear
- 4 x Tile 1x1 W Clip Round Edges - Black
- 4 x Plate 1x1 Mod Rounded w Handle - Black
- 1 x Plate 1x2 MW Stud Jumper - Black
- 1 x Round Plate 1x1 - Trans Blue

* Indicates components which include spares

Contents

| | |
|------------------|----|
| Before You Begin | 5 |
| Blueprint | 8 |
| Instructions | 10 |
| Final Product | 72 |
| Troubleshooting | 73 |
| Contact | 78 |

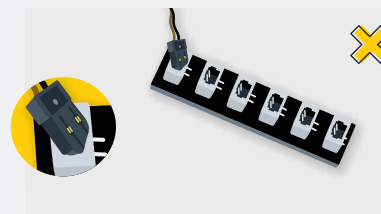
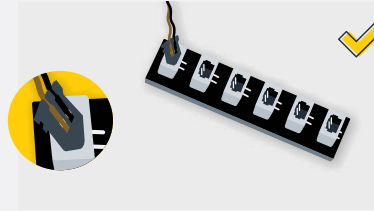
Before You Begin



Laying cables in between and underneath bricks

Cables can fit in between and underneath LEGO® bricks, plates, and tiles providing they are laid correctly between the LEGO® studs. Do NOT forcefully join LEGO® together around cables; instead ensure they are laying comfortably in between each stud.

CAUTION: Forcing LEGO® to connect over a cable can result in damaging the cable and light.

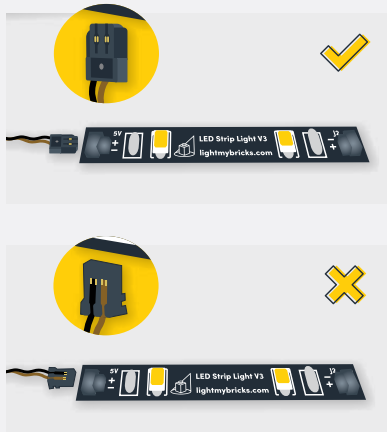


Connecting Cable Connectors To Expansion Boards

Take extra care when inserting connectors to ports of Expansion Boards. Connectors can be inserted only one way. With the expansion board facing up, look for the soldered “=” symbol on the left side of the port. The connector side with the wires exposed should be facing toward the soldered “=” symbol as you insert into the port. If a plug won’t fit easily into a port connector, do not force it.

Incorrectly inserting the connector can result in bent pins inside the port or possible overheating of the expansion board when connected.

Before You Begin



Connecting Cable Connectors To Strip Lights

Take extra care when inserting connectors to ports on the Strip Lights. Connectors can be inserted only one way. With the Strip Light facing up, ensure the side of the connector with the wires exposed is facing down. If a plug won't fit easily into a port connector, don't force it. Doing so will damage the plug and the connector.



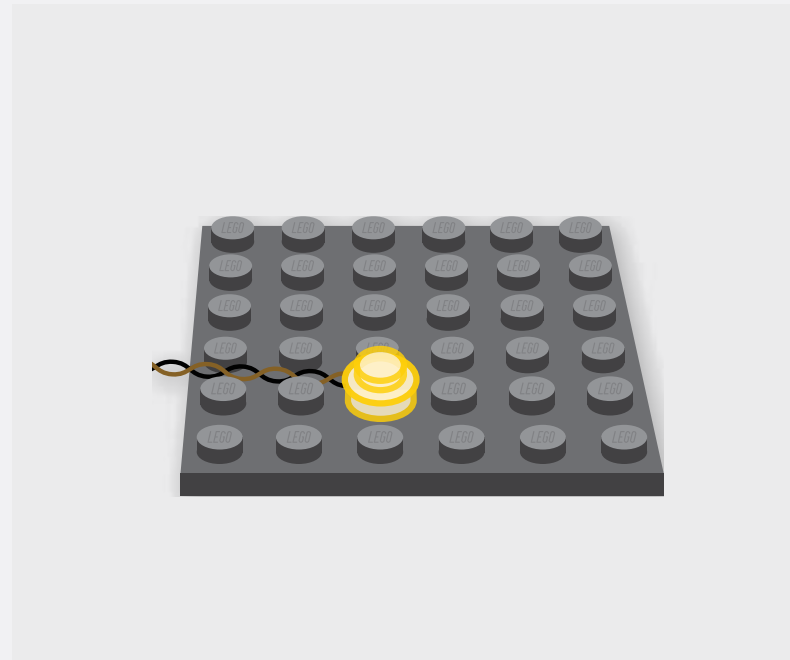
Connecting Micro Cable Connectors To Micro Expansion Board Ports

Take extra care when inserting the micro connectors to micro ports of Micro Expansion Boards. Connecting Micro Bit Lights to Micro Expansion Boards is similar to connecting lights and cables to Strip Lights. With the expansion board facing up, ensure the side of the connector with the wires exposed is facing down. If a plug won't fit easily into a port connector, do not force it. Use your fingernail to push the plastic part of the connector to the micro port.

Before You Begin

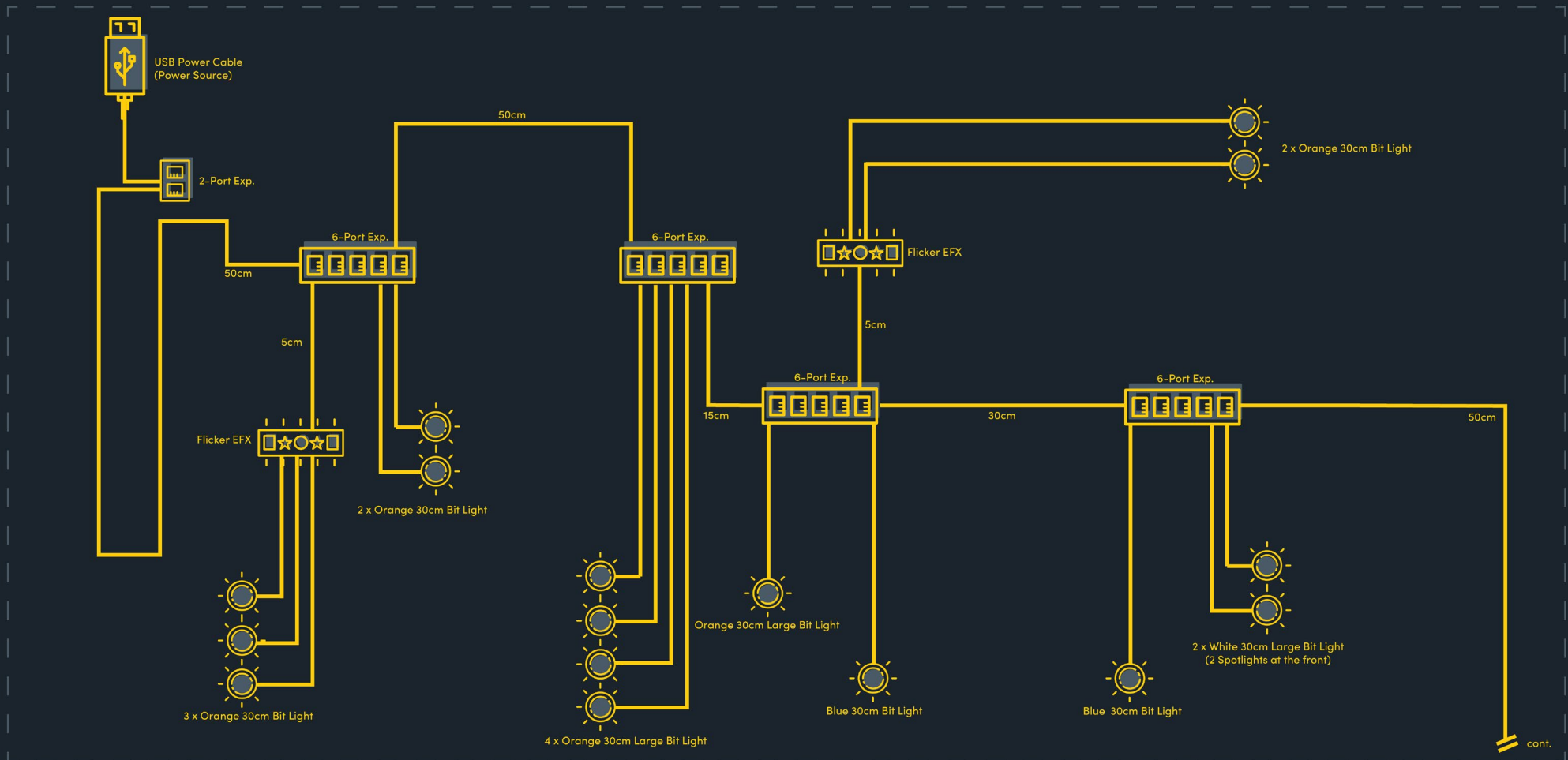
Installing Bit Lights Under Lego® Bricks And Plates

When installing Bit Lights under LEGO® pieces, ensure they are placed the correct way up (Yellow LED component exposed). You can either place them directly on top of LEGO® studs or in between.



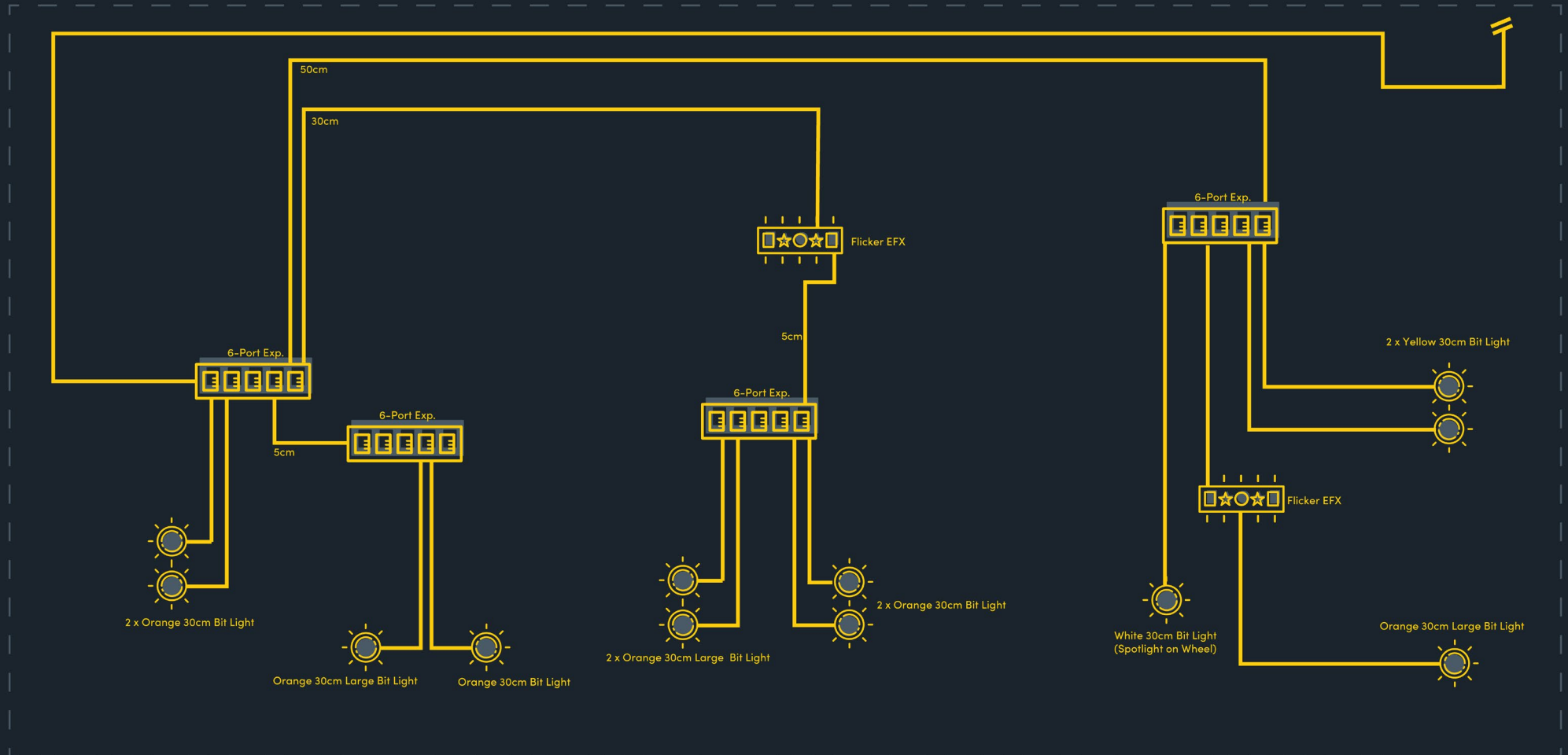
BLUEPRINT

Main Castle Area (w/ Bridge)



BLUEPRINT

Secondary Castle Area





INSTRUCTIONS

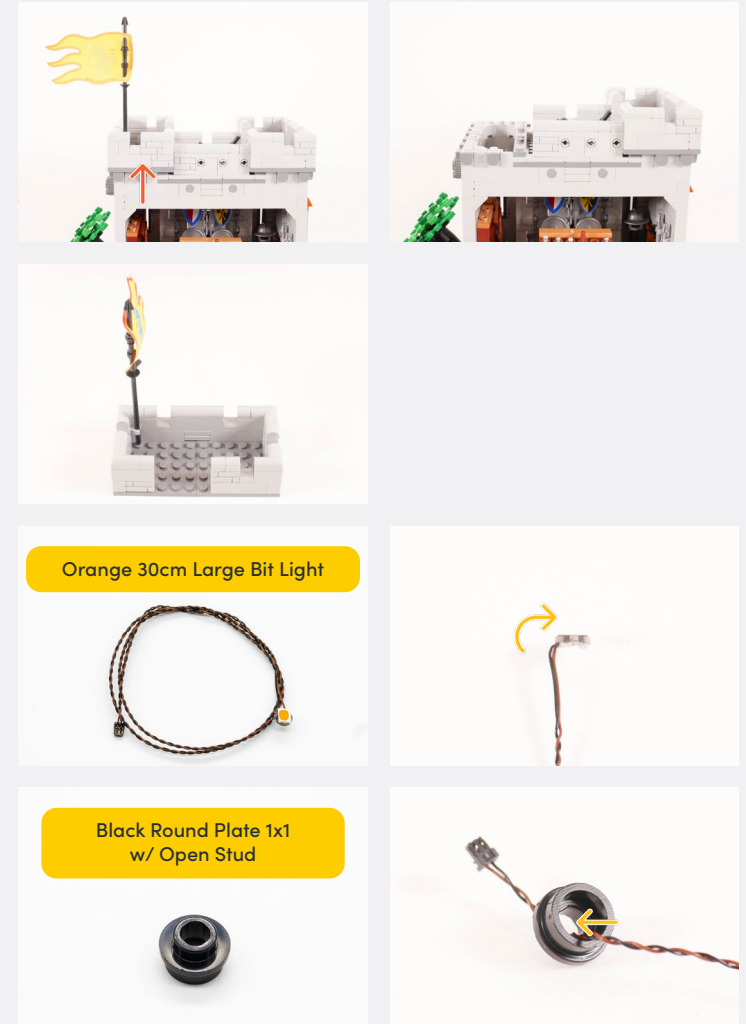
To ensure a smooth installation of your light kit, please read and follow each step carefully. If you run into any issues, please refer to the online troubleshooting guide.

| | | | | | | | | | | | | | |
|--|-----------|--|-------------|--|-----------------------------|--|--------------------|--|--------------|--|----------------------|--|----------------------|
| | LEGEND: | | DISCONNECT | | CONNECT / RECONNECT | | TURN / FLIP WENDEN | | DIRECTIONAL | | TWIST / BRAID DREHEN | | POWER ON / TEST |
| | LEGENDE: | | TRENNEN | | VERNINDEN / WIEDERVERBINDEN | | WENDEN / KIPPEN | | DIRECTIONAL | | DREHEN / VERDREHEN | | EINSCHALTEN / TESTEN |
| | LÉGENDE: | | DÉCONNECTER | | CONNECTER / RECONNECTER | | TOUR / INCLINAISON | | DIRECTIONNEL | | TORSION / TRESSER | | POWER ON / TEST |
| | LEGGENDA: | | SCOLLEGARE | | CONNETTI / RICONNETTI | | ROTARE / INCLINARE | | DIREZIONALE | | TWIST / TRECCIA | | POWER ON / TEST |

1

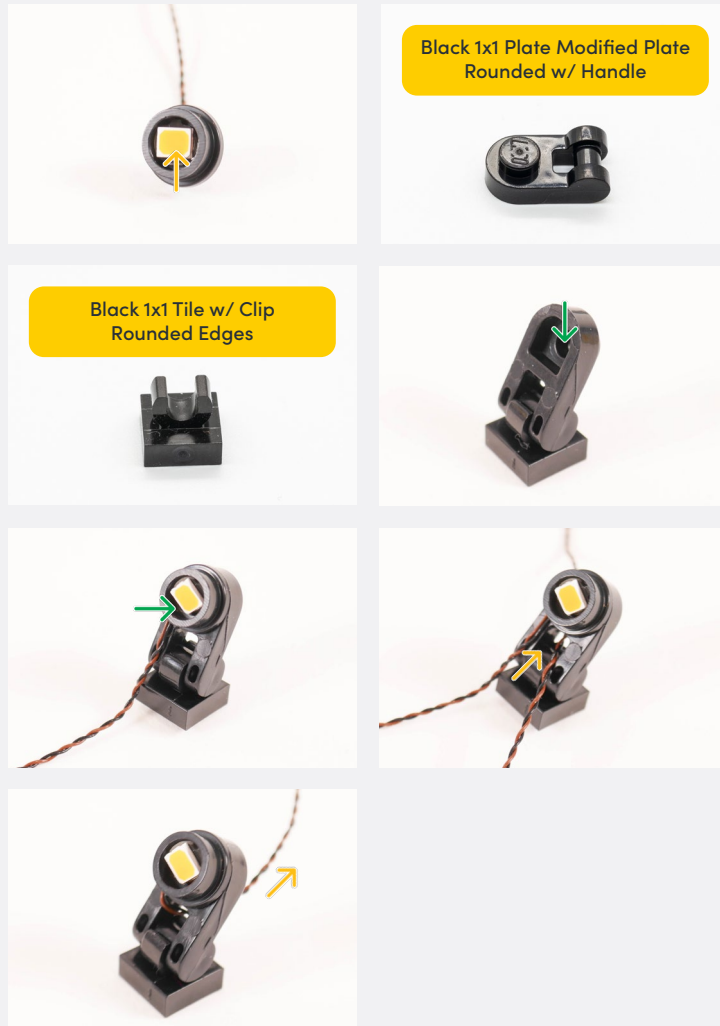


2

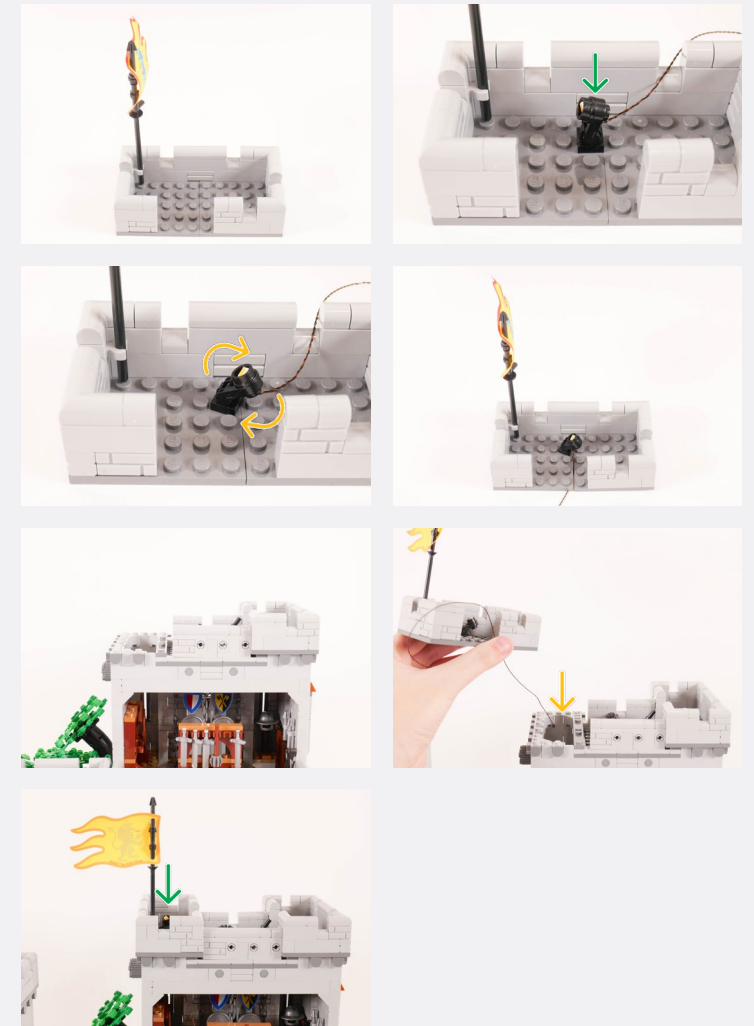


Legend

- DISCONNECT
- CONNECT / RECONNECT
- TURN / FLIP
- DIRECTIONAL
- TWIST / BRAID
- POWER ON TEST
- NOTE ICON



3





Legend







- DISCONNECT
- CONNECT / RECONNECT
- TURN / FLIP
- DIRECTIONAL
- TWIST / BRAID
- POWER ON TEST
- NOTE ICON


4

Orange 30cm Large Bit Light


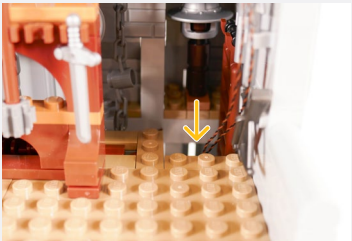
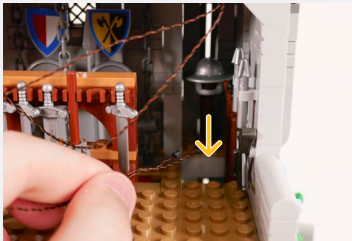
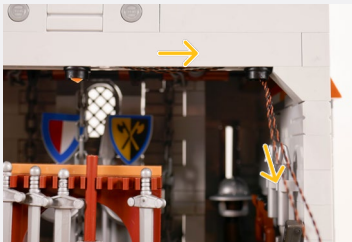
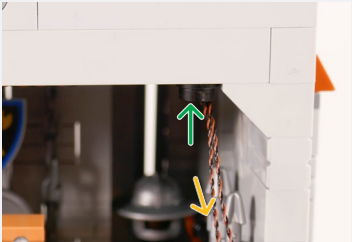
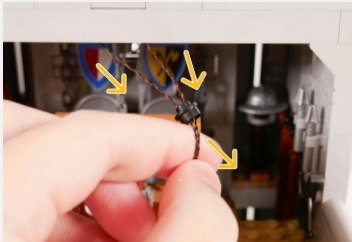



Black Round Plate 1x1 w/ Open Stud

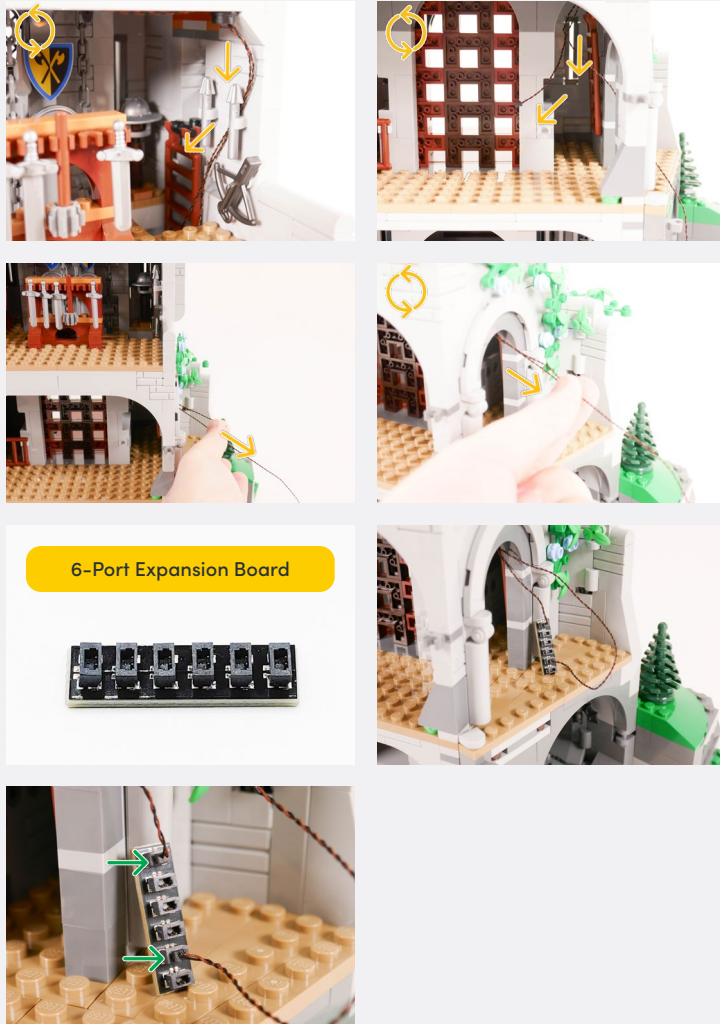
 Thread both of the cables through the Open Stud

Black Round Plate 1x1 w/ Open Stud

Legend

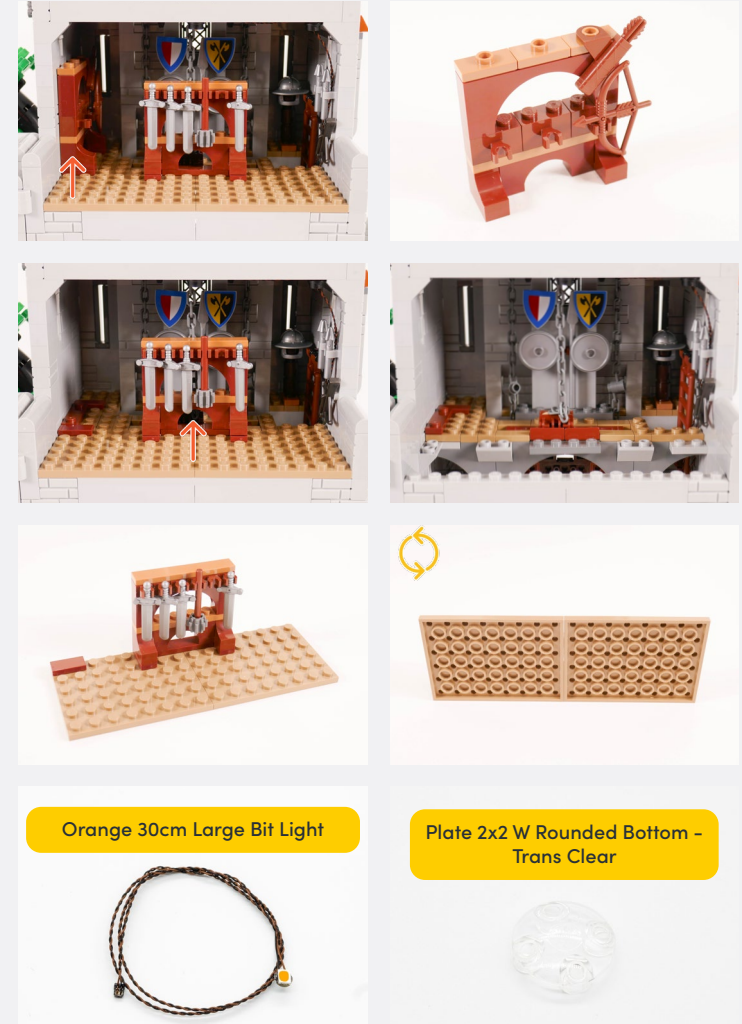
-  DISCONNECT
-  CONNECT / RECONNECT
-  TURN / FLIP
-  DIRECTIONAL
-  TWIST / BRAID
-  POWER ON TEST
-  NOTE ICON



6-Port Expansion Board



5



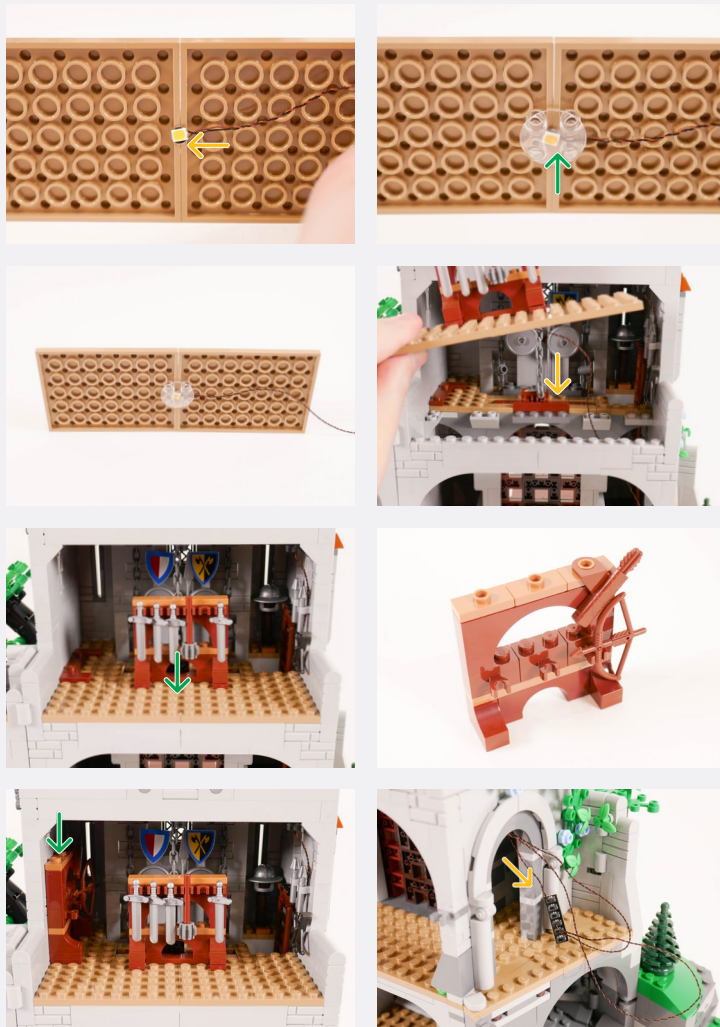
Orange 30cm Large Bit Light



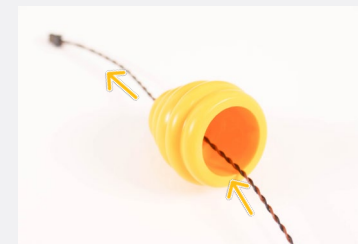
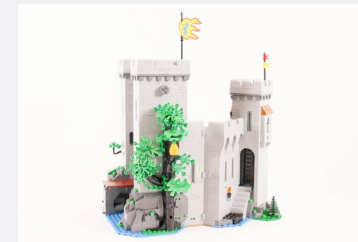
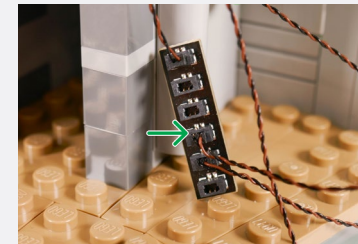
Plate 2x2 W Rounded Bottom - Trans Clear



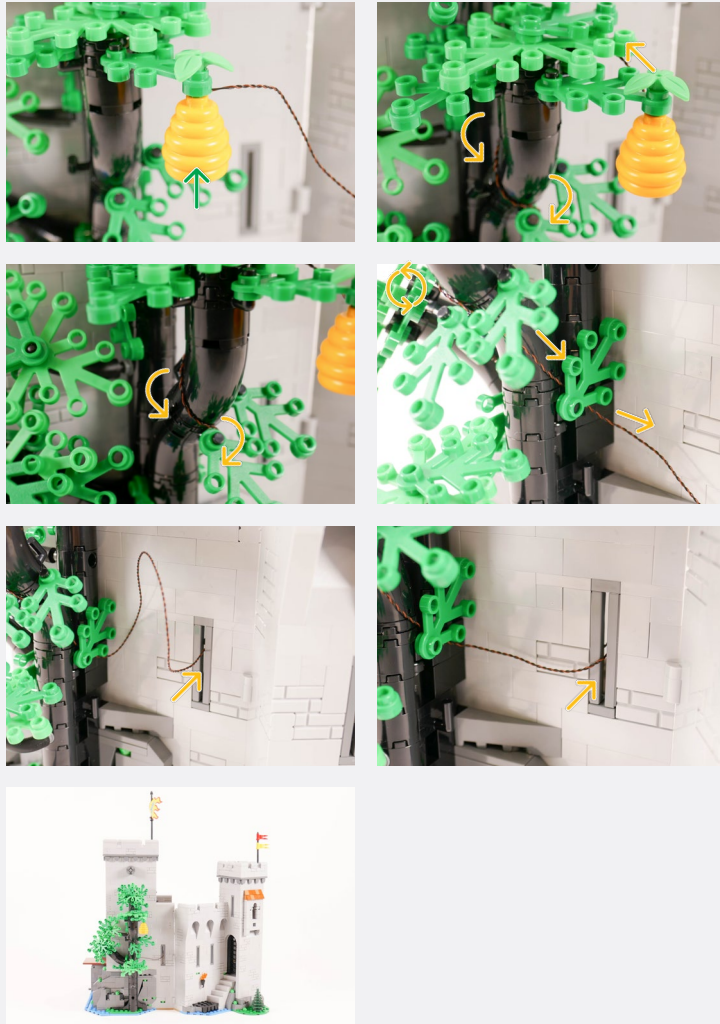
Legend → DISCONNECT → CONNECT / RECONNECT ↻ TURN / FLIP → DIRECTIONAL ↻ TWIST / BRAID * POWER ON TEST 📝 NOTE ICON



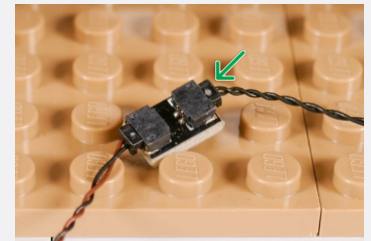
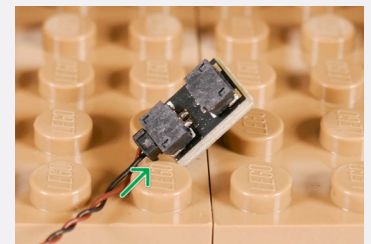
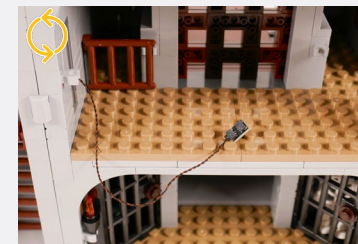
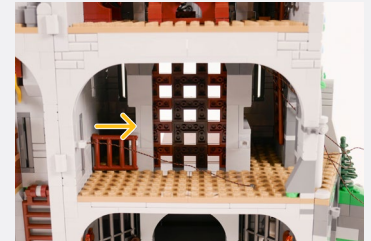
6



Legend → DISCONNECT → CONNECT / RECONNECT ↻ TURN / FLIP → DIRECTIONAL ↻ TWIST / BRAID * POWER ON TEST 📝 NOTE ICON



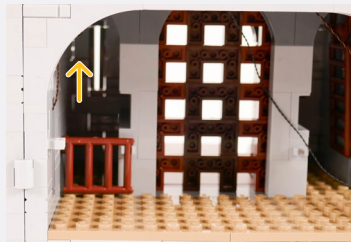
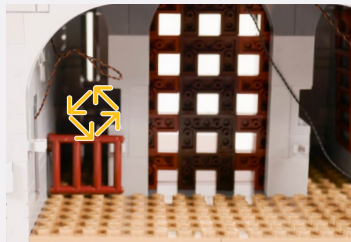
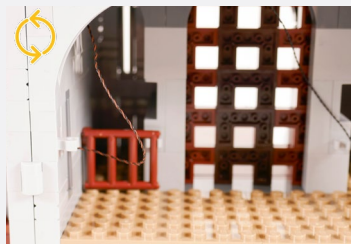
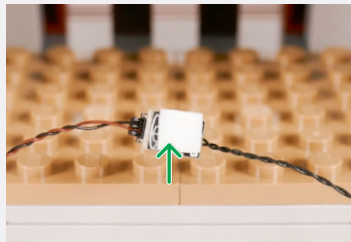
7



Legend → DISCONNECT → CONNECT / RECONNECT ↻ TURN / FLIP → DIRECTIONAL ↻ TWIST / BRAID ✨ POWER ON TEST 📝 NOTE ICON



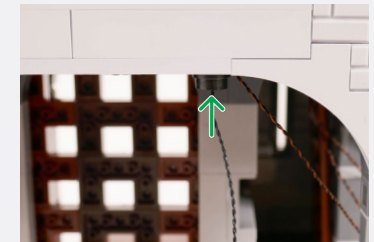
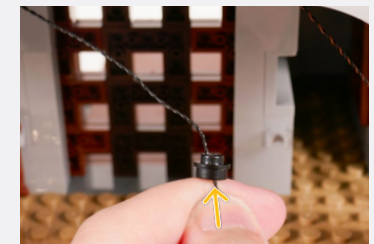
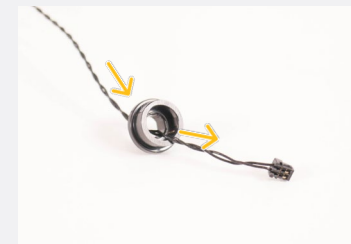
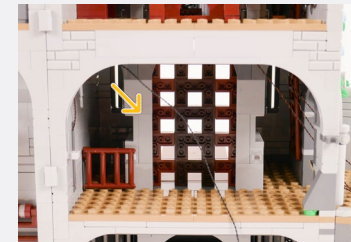
Adhesive Square



8



Black Round Plate 1x1 w/ Open Stud



Legend

- DISCONNECT
- CONNECT / RECONNECT
- TURN / FLIP
- DIRECTIONAL
- TWIST / BRAID
- POWER ON TEST
- NOTE ICON



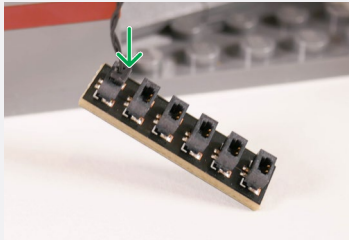
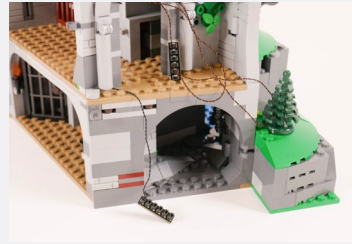
Push the cables up to the ceiling so they are not visible



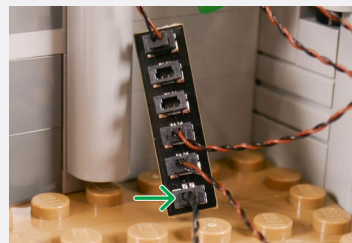
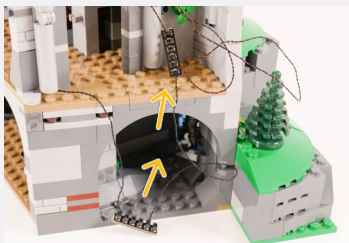
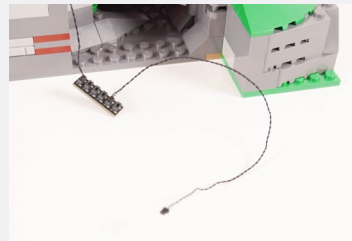
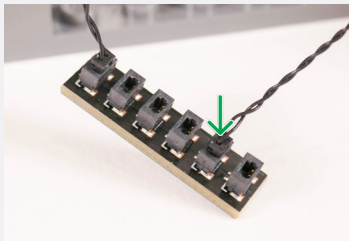
Legend DISCONNECT CONNECT / RECONNECT TURN / FLIP DIRECTIONAL TWIST / BRAID POWER ON TEST NOTE ICON

9

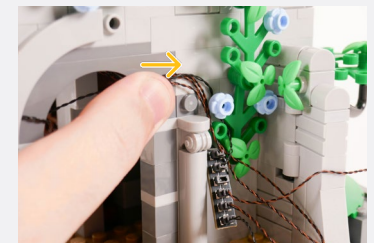
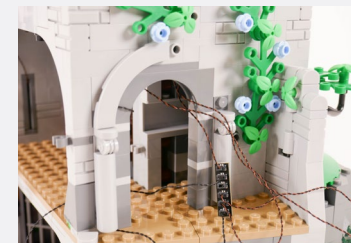
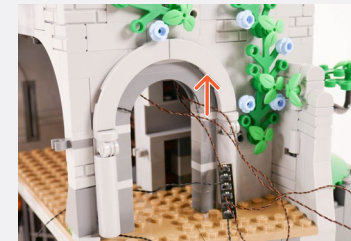
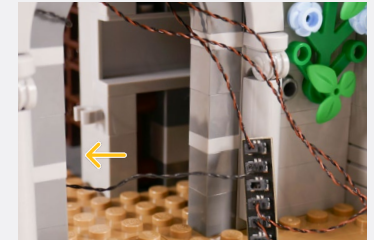
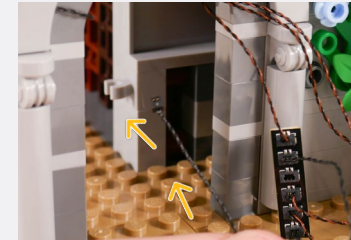
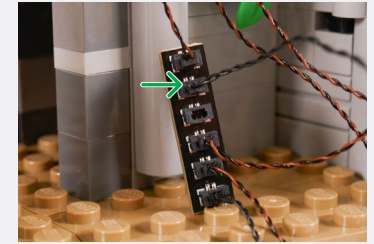
6-Port Expansion Board



15cm Connecting Cable



50cm Connecting Cable



Legend



10

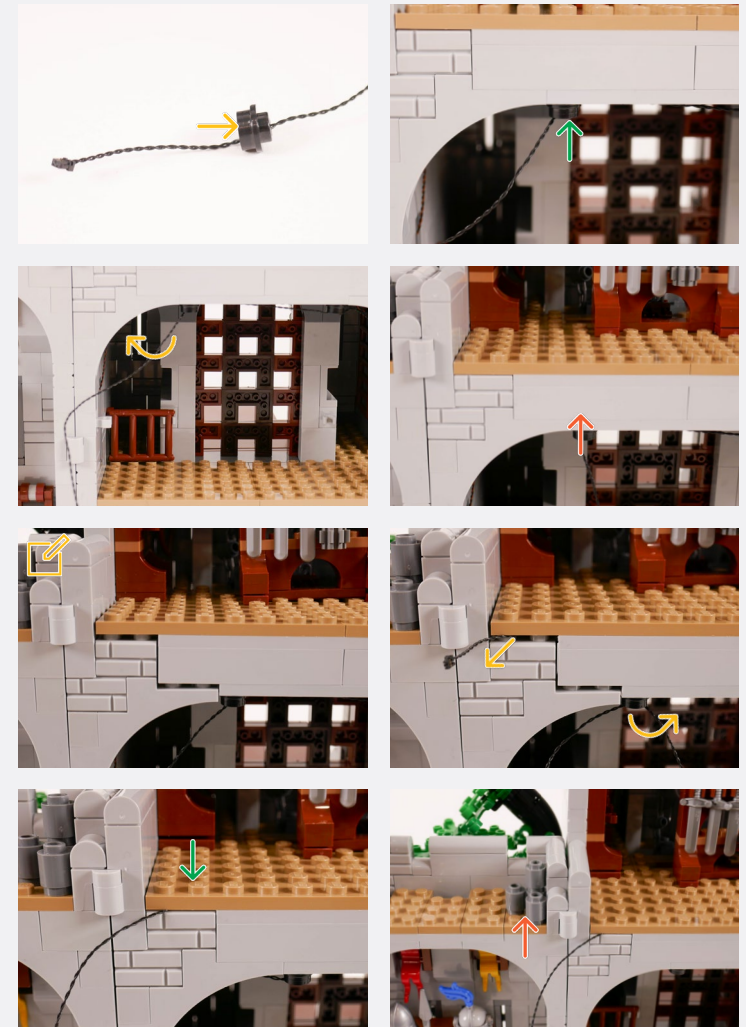


✍ Thread the 50cm Connecting Cable from the previous step through the Round Plate 1x1 w/ Open Stud - Black

Black Round Plate 1x1 w/ Open Stud



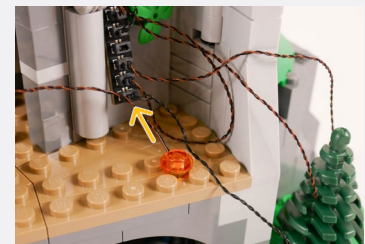
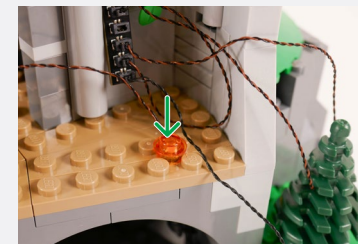
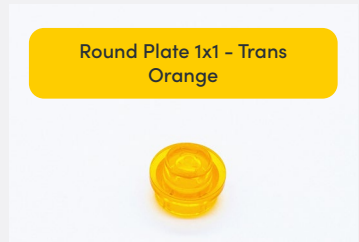
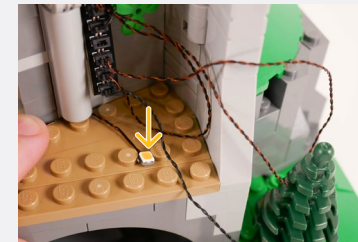
✍ Ensure to only lift up the plate as much as shown. Lifting too far will cause the Large Orange Bit Light you installed previously to come loose.



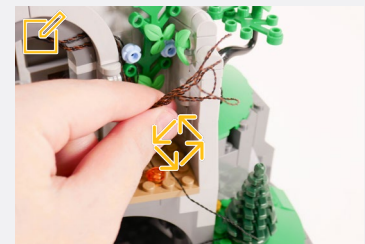
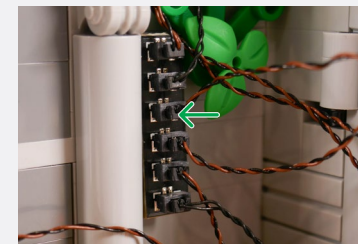
Legend → DISCONNECT → CONNECT / RECONNECT ↻ TURN / FLIP → DIRECTIONAL ↻ TWIST / BRAID * POWER ON TEST ✍ NOTE ICON



11

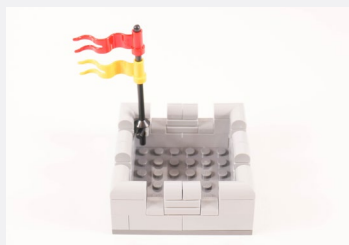
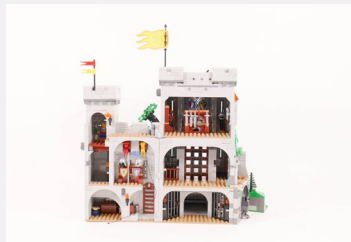


✂ Exclude the 15cm Connecting Cable from twisting



Legend → DISCONNECT → CONNECT / RECONNECT ↻ TURN / FLIP → DIRECTIONAL ↻ TWIST / BRAID ✨ POWER ON TEST 📝 NOTE ICON

12



Orange 30cm Bit Light

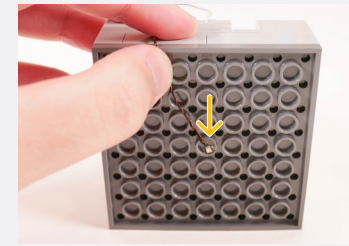
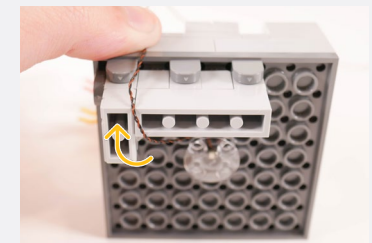
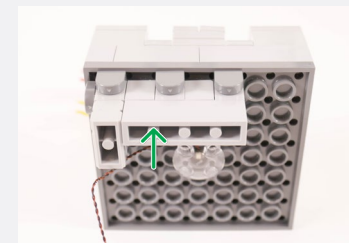
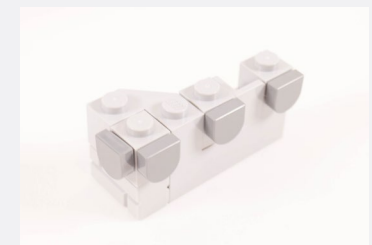
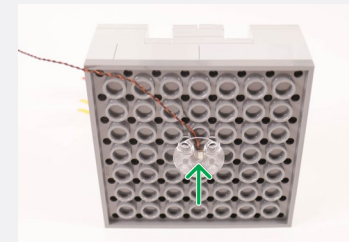
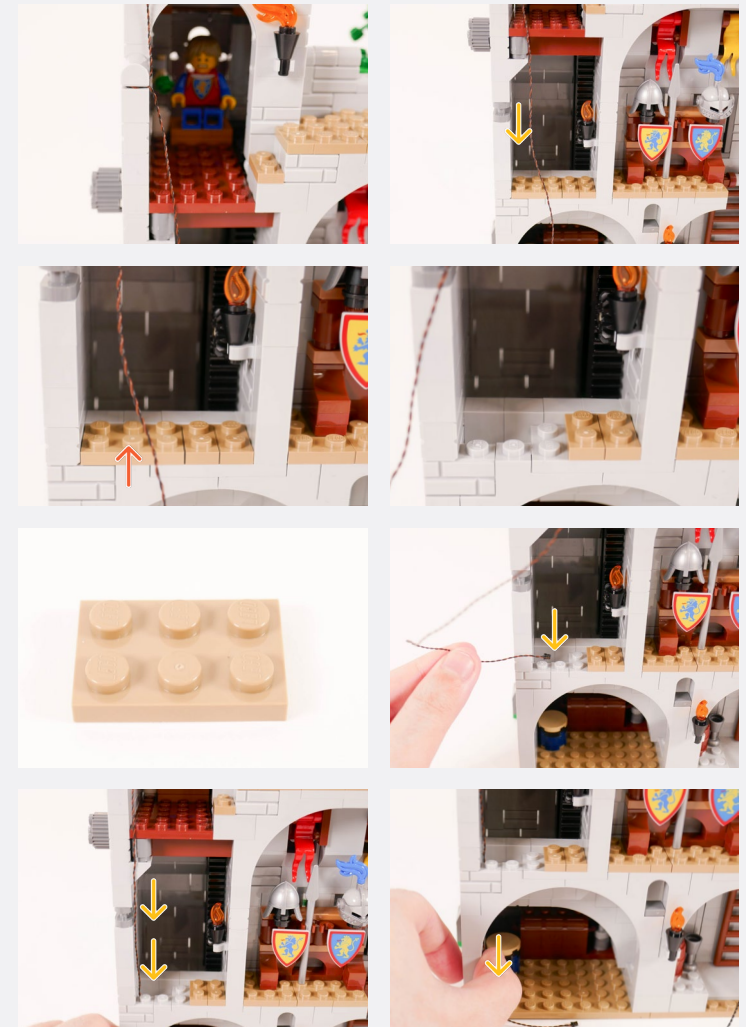
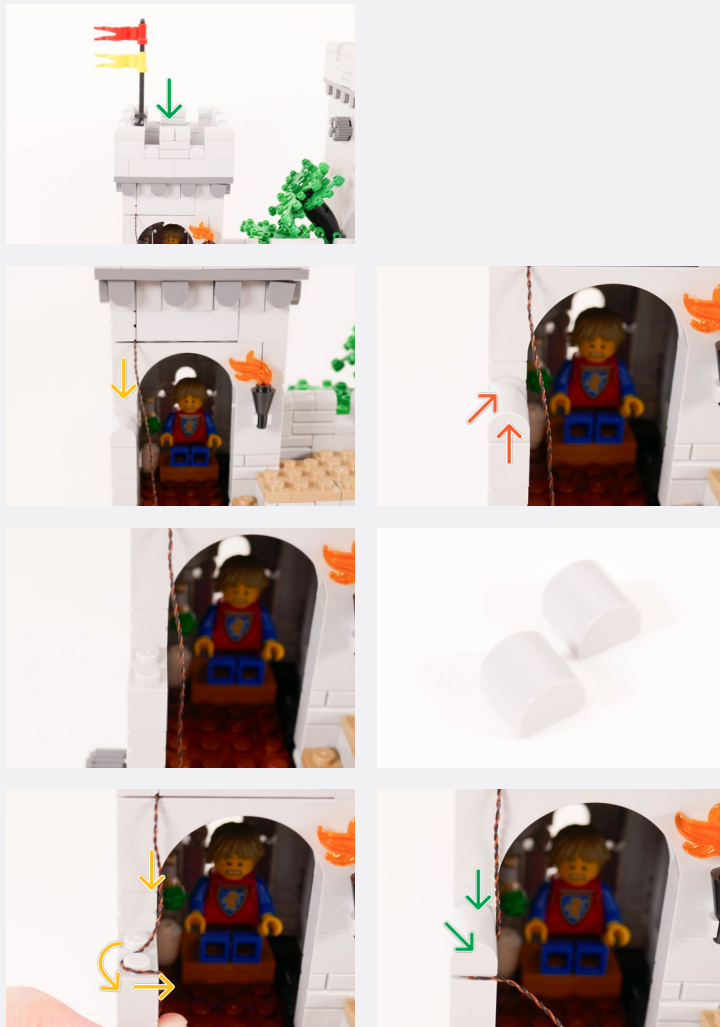


Plate 2x2 W Rounded Bottom - Trans Clear

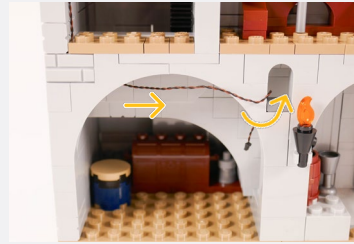
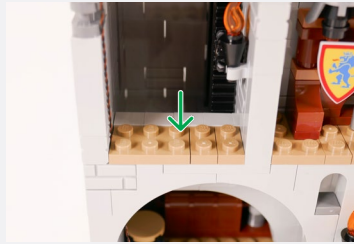


Legend → DISCONNECT → CONNECT / RECONNECT ↻ TURN / FLIP → DIRECTIONAL ↻ TWIST / BRAID ✨ POWER ON TEST 📝 NOTE ICON

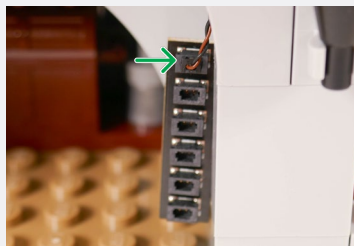
13



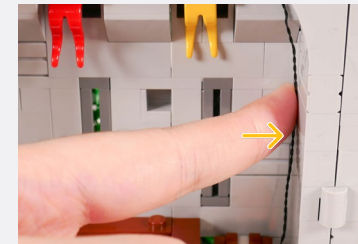
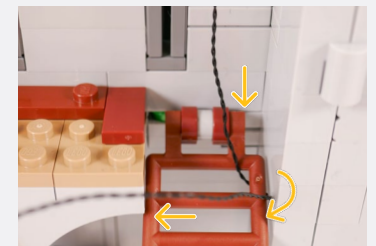
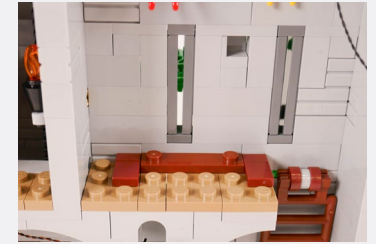
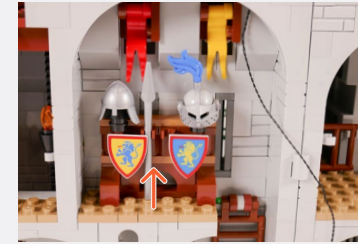
Legend DISCONNECT CONNECT / RECONNECT TURN / FLIP DIRECTIONAL TWIST / BRAID POWER ON TEST NOTE ICON



6-Port Expansion Board

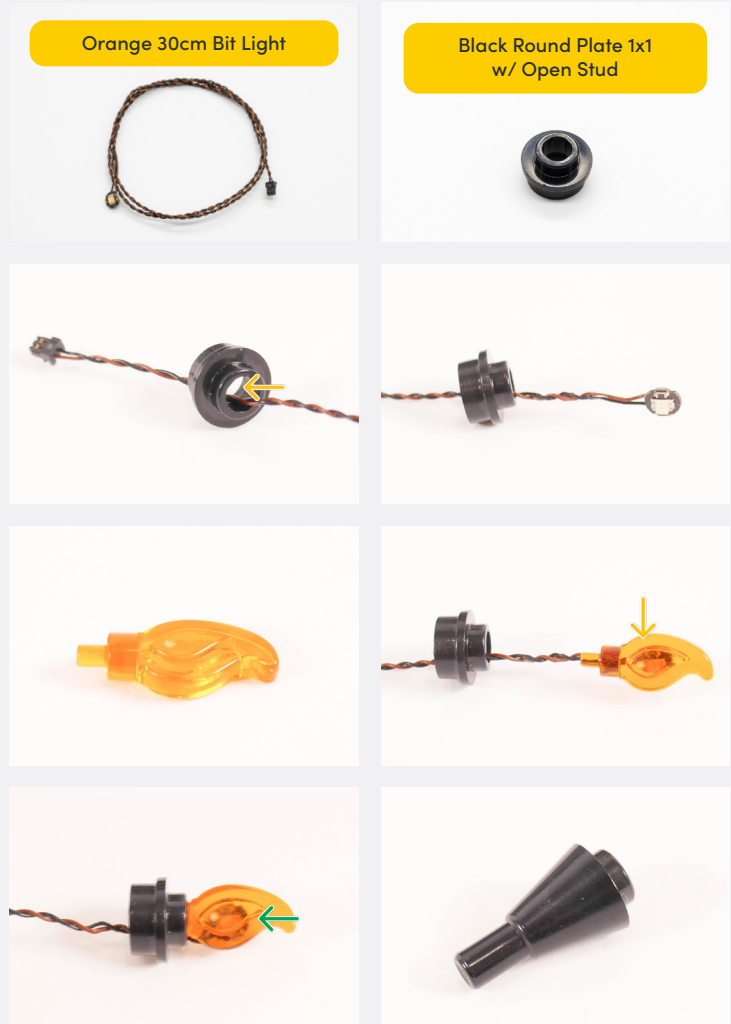
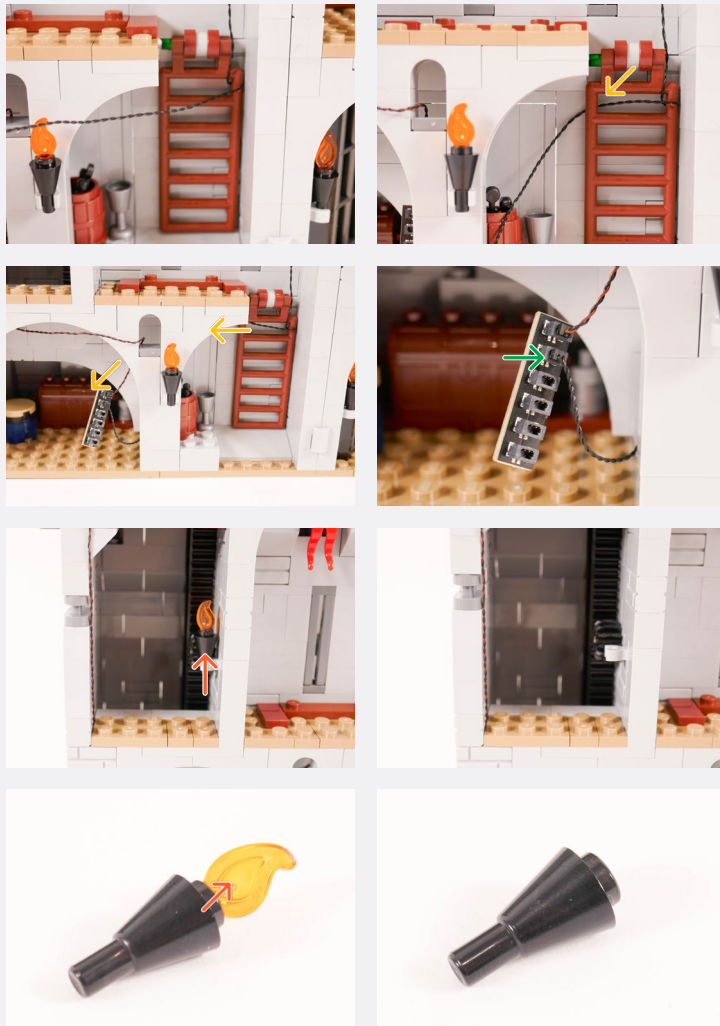


14



Legend → DISCONNECT → CONNECT / RECONNECT ↻ TURN / FLIP → DIRECTIONAL ↻ TWIST / BRAID * POWER ON TEST 📝 NOTE ICON

15



Legend

- DISCONNECT
- CONNECT / RECONNECT
- ↻ TURN / FLIP
- DIRECTIONAL
- ↔ TWIST / BRAID
- ✳ POWER ON TEST
- 📝 NOTE ICON

16



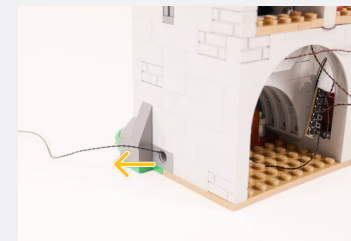
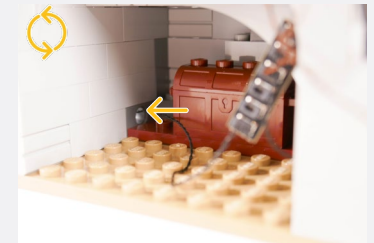
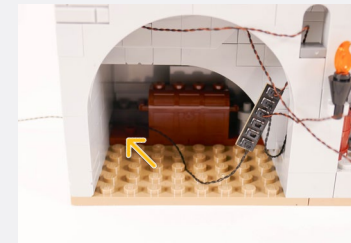
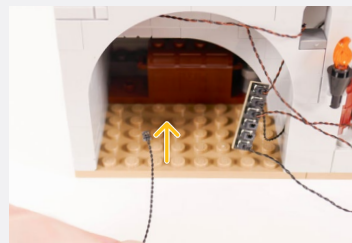
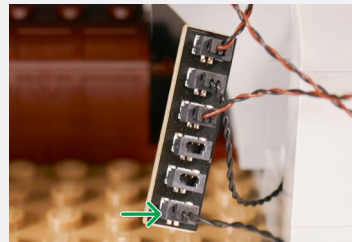
Legend

- DISCONNECT
- CONNECT / RECONNECT
- ↻ TURN / FLIP
- DIRECTIONAL
- ↻↻ TWIST / BRAID
- ✳ POWER ON TEST
- 📝 NOTE ICON

17



50cm Connecting Cable



Legend

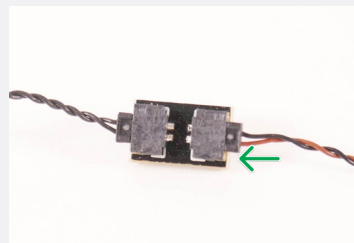
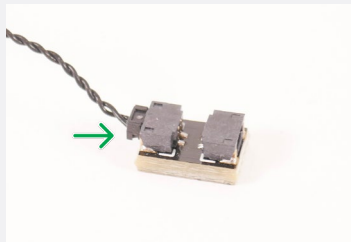
- DISCONNECT
- CONNECT / RECONNECT
- TURN / FLIP
- DIRECTIONAL
- TWIST / BRAID
- POWER ON TEST
- NOTE ICON

If you experience any issues with the lights not working and suspect an issue with a component, please try a different port on the expansion board to verify where the fault lies (with the light or expansion board). To correct any issues with expansion board ports, please view the section addressing expansion board issues in our troubleshooting section.

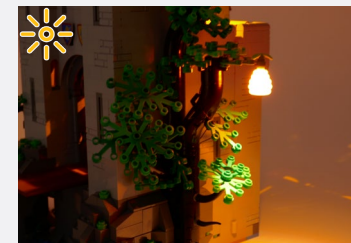
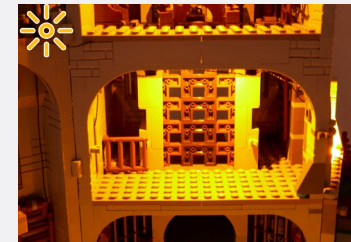
2-Port Expansion Board



USB Power Cable



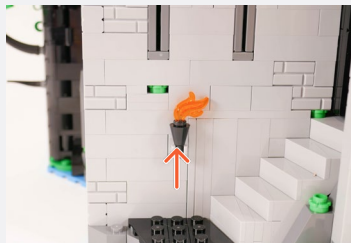
Connect the other end to a 5V USB Power Bank, 5V USB Wall Adaptor, or USB to AA Battery Pack (sold separately)



Legend

- DISCONNECT
- CONNECT / RECONNECT
- TURN / FLIP
- DIRECTIONAL
- TWIST / BRAID
- POWER ON TEST
- NOTE ICON

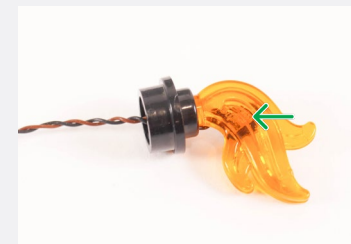
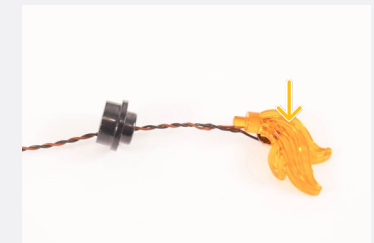
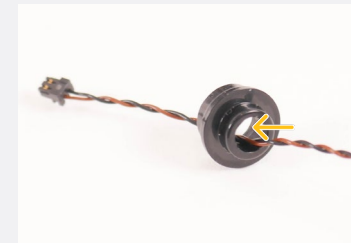
19



Orange 30cm Bit Light

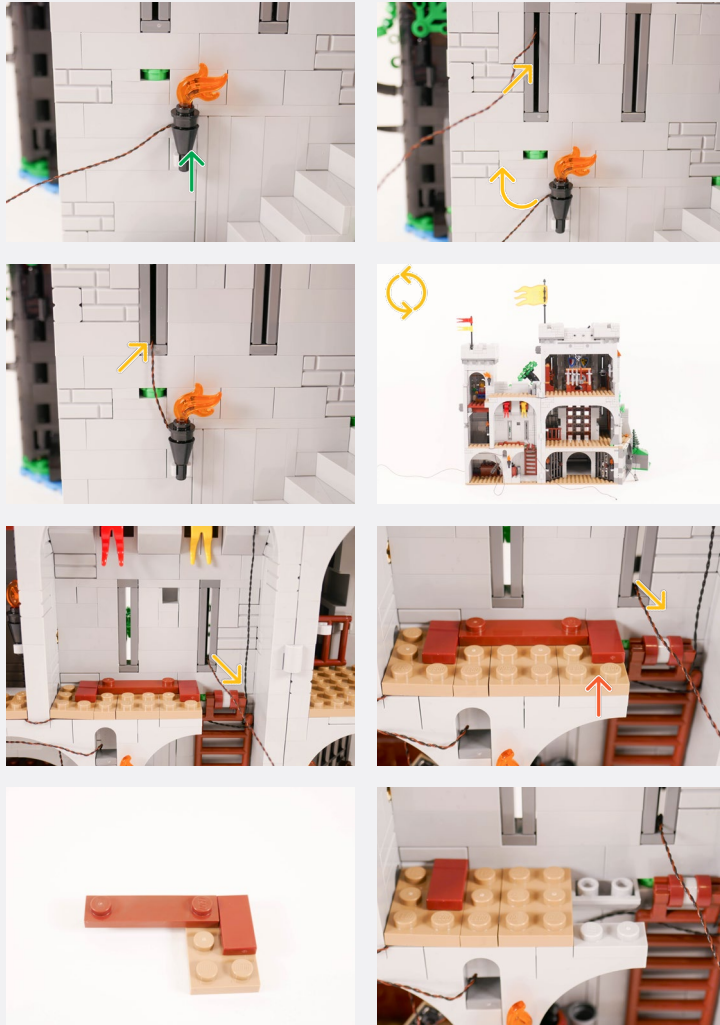



Black Round Plate 1x1 w/ Open Stud



Legend → DISCONNECT → CONNECT / RECONNECT ↻ TURN / FLIP → DIRECTIONAL ↻ TWIST / BRAID ✨ POWER ON TEST 📝 NOTE ICON

20



 Connect the Orange 30cm Bit Light from the previous step to the 'OUT' port of the Flicker Effects Board



Legend

-  DISCONNECT
-  CONNECT / RECONNECT
-  TURN / FLIP
-  DIRECTIONAL
-  TWIST / BRAID
-  POWER ON TEST
-  NOTE ICON

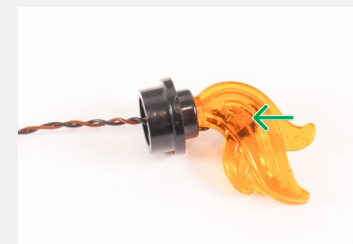
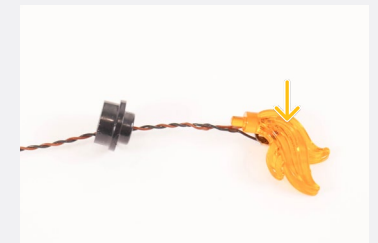
21



Orange 30cm Bit Light

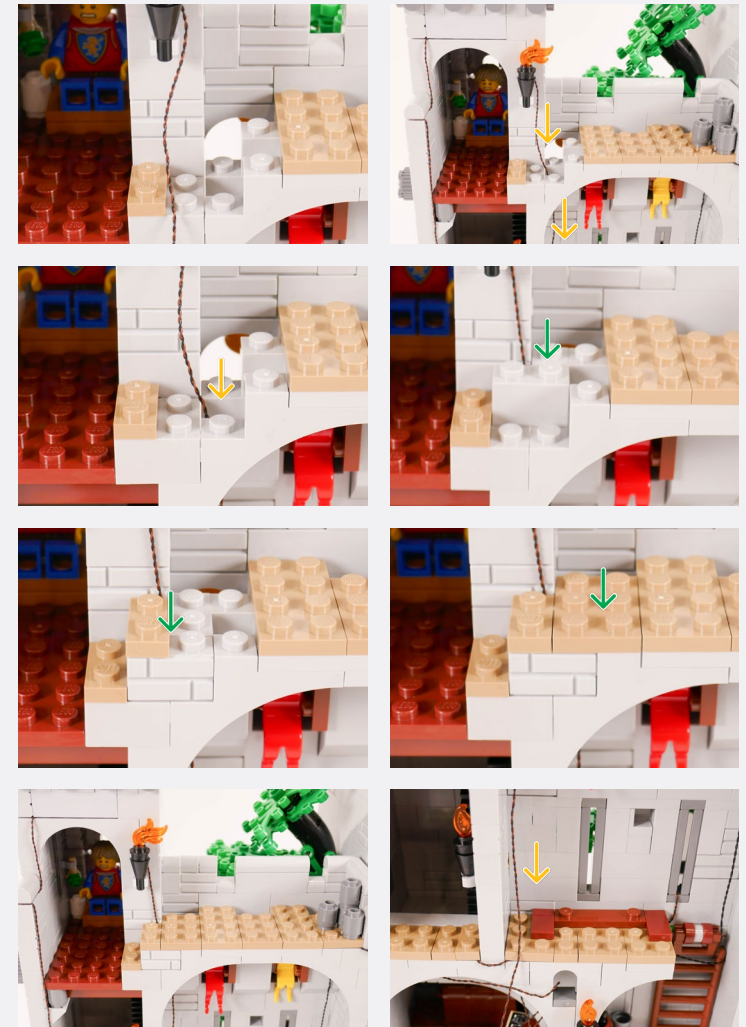


Black Round Plate 1x1 w/ Open Stud

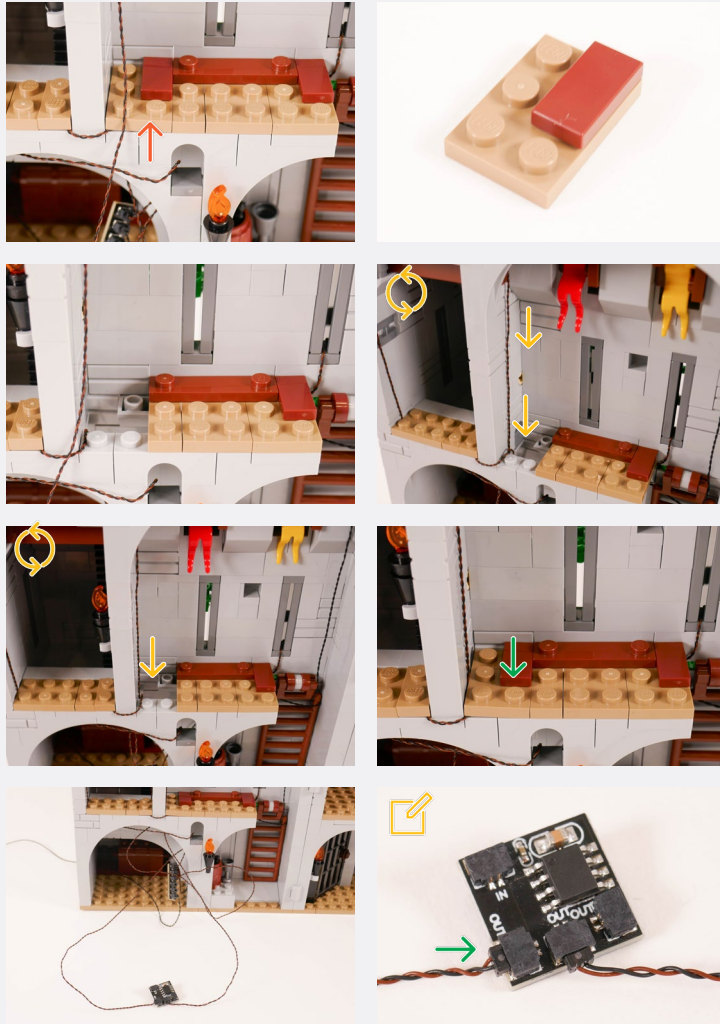



Legend → DISCONNECT → CONNECT / RECONNECT ↻ TURN / FLIP → DIRECTIONAL ↺ TWIST / BRAID ✨ POWER ON TEST 📝 NOTE ICON

22

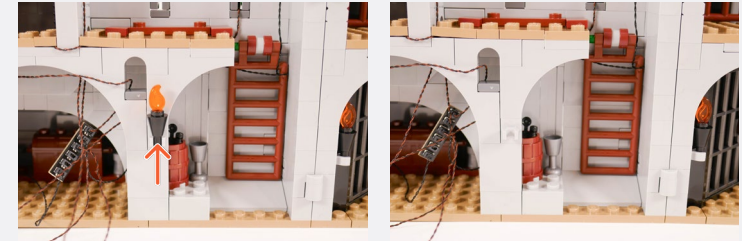


Legend → DISCONNECT → CONNECT / RECONNECT ↻ TURN / FLIP → DIRECTIONAL ↻ TWIST / BRAID * POWER ON TEST 📝 NOTE ICON



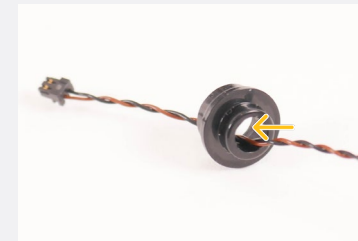
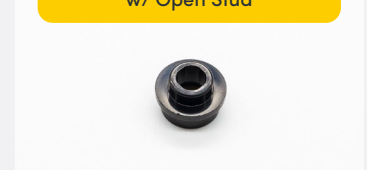
 Connect the Orange 30cm Bit Light from Step 21 to the 'OUT' Port of the Flicker Effects Board

23



Orange 30cm Bit Light

Black Round Plate 1x1 w/ Open Stud



Legend  DISCONNECT  CONNECT / RECONNECT  TURN / FLIP  DIRECTIONAL  TWIST / BRAID  POWER ON TEST  NOTE ICON

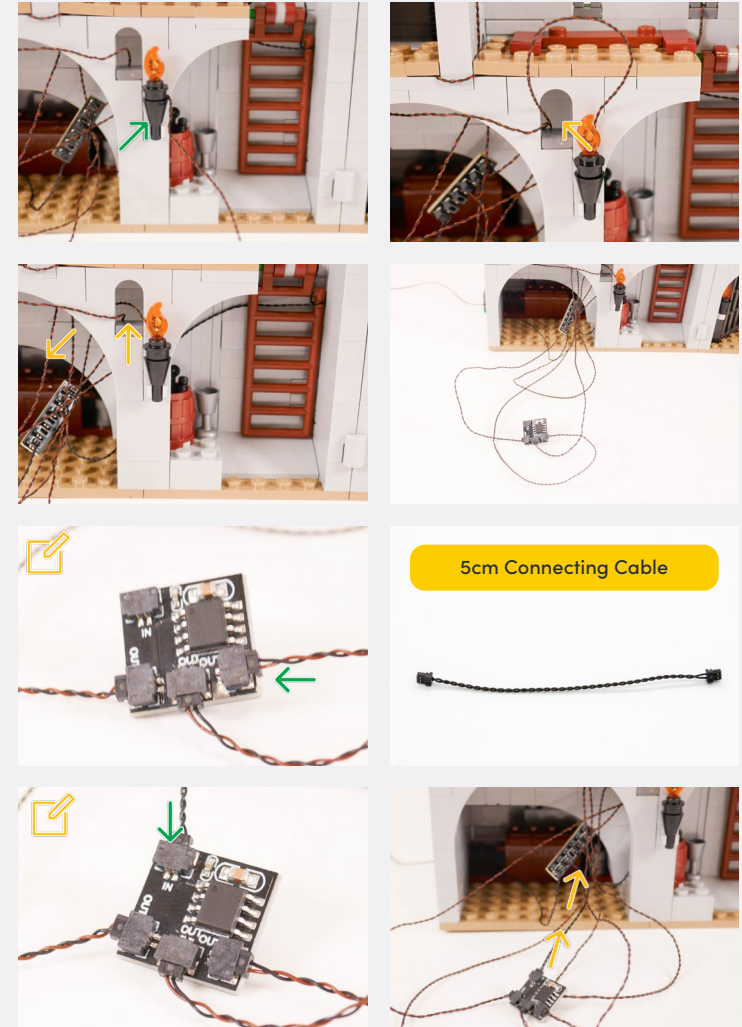


✂ Connect the other end to a 5V USB Power Bank, 5V USB Wall Adaptor, or USB to AA Battery Pack (sold separately)

24

✂ Connect the Orange 30cm Bit Light from Step 23 to the 'OUT' Port of the Flicker Effects Board

✂ Connect the 5cm Connecting Cable to the 'IN' Port of the Flicker Effects Board



5cm Connecting Cable

Legend → DISCONNECT → CONNECT / RECONNECT ↻ TURN / FLIP → DIRECTIONAL ↺ TWIST / BRAID * POWER ON TEST ✂ NOTE ICON

Connect the other end of the 5cm Connecting Cable to the 6-Port Expansion Board

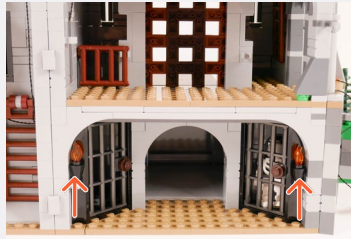
Twist all the cables but exclude the 50cm Connecting Cable

Hide the Cables and Boards behind the pillar



Legend DISCONNECT CONNECT / RECONNECT TURN / FLIP DIRECTIONAL TWIST / BRAID POWER ON TEST NOTE ICON

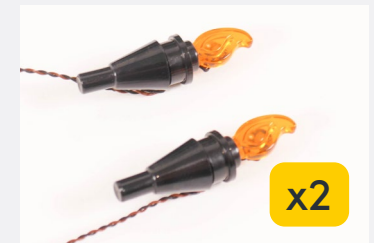
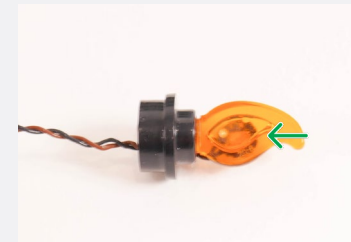
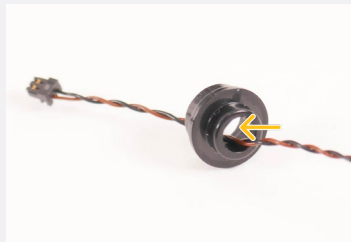
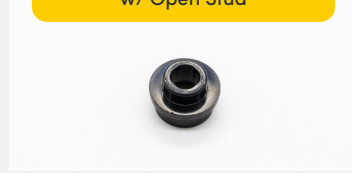
25



Orange 30cm Bit Light

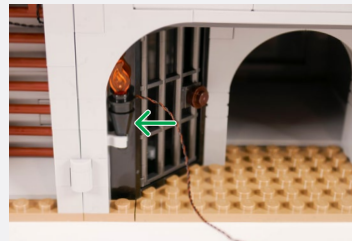


Black Round Plate 1x1 w/ Open Stud

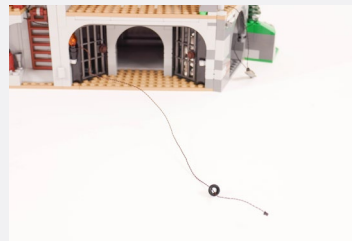


Legend → DISCONNECT → CONNECT / RECONNECT ↻ TURN / FLIP → DIRECTIONAL ↻ TWIST / BRAID ✨ POWER ON TEST 📄 NOTE ICON

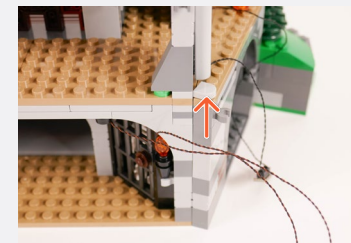
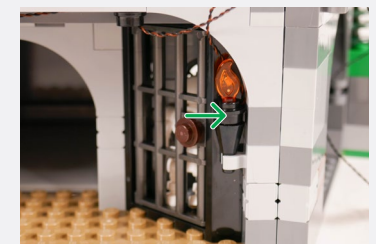
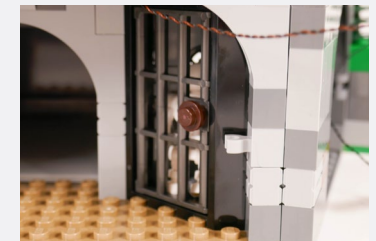
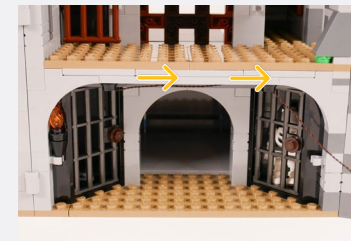
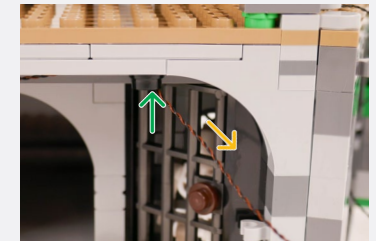
26



Black Round Plate 1x1 w/ Open Stud



Black Round Plate 1x1 w/ Open Stud



Legend



CONNECT / RECONNECT



TURN / FLIP



DIRECTIONAL



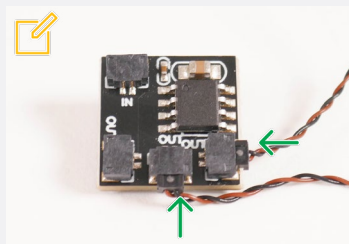
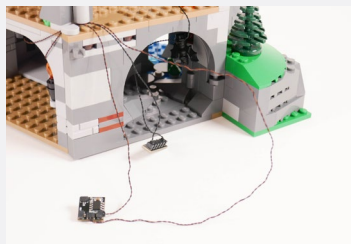
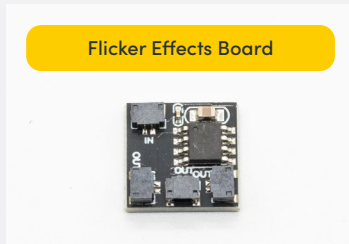
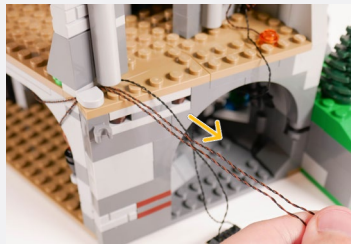
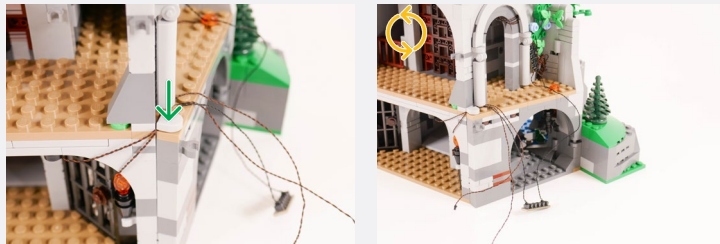
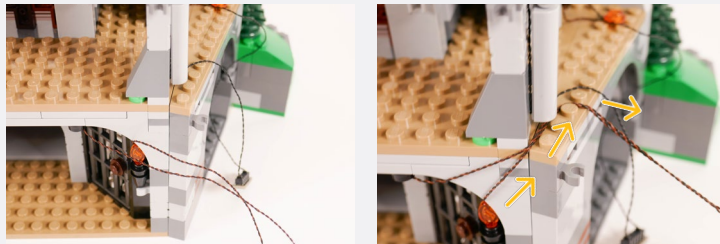
TWIST / BRAID



POWER ON TEST



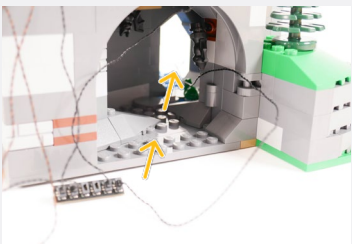
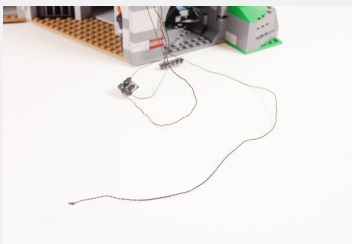
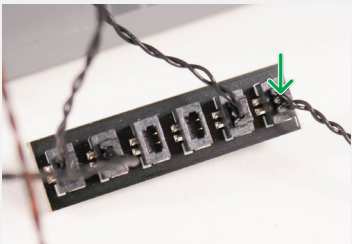
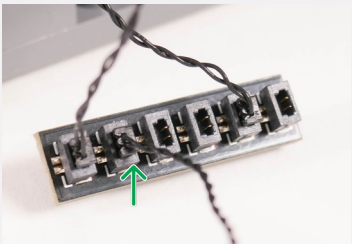
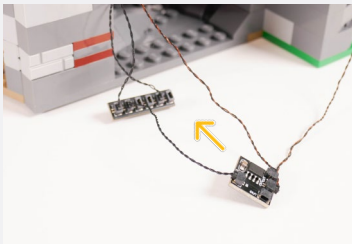
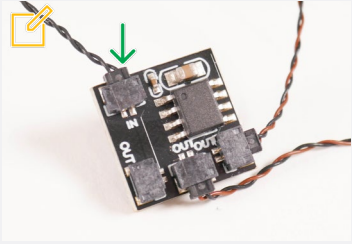
NOTE ICON



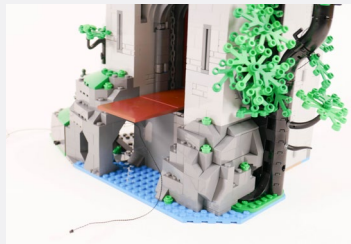
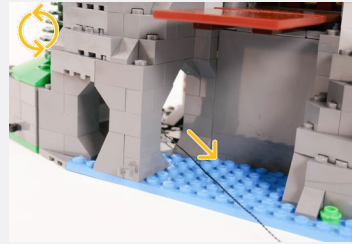
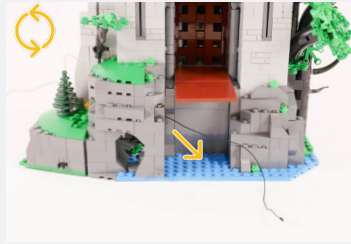
Connect the two Orange 30cm Bit Lights from Step 25 to the 'OUT' Port of the Flicker Effects Board

27

Connect the 5cm Connecting Cable to the 'IN' Port of the Flicker Effects Board

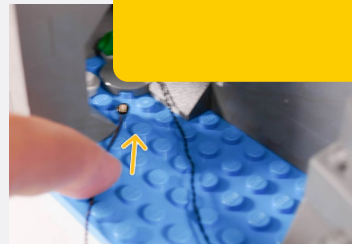


Legend DISCONNECT CONNECT / RECONNECT TURN / FLIP DIRECTIONAL TWIST / BRAID POWER ON TEST NOTE ICON

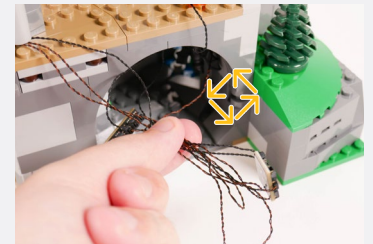
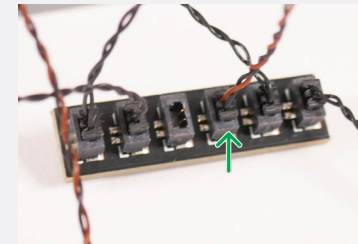
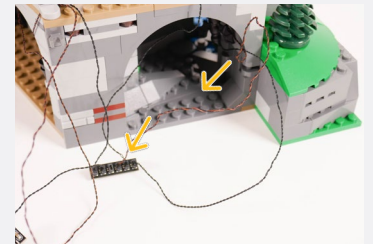
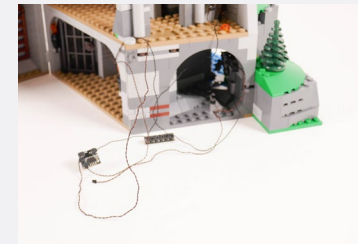
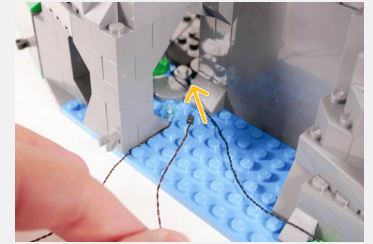
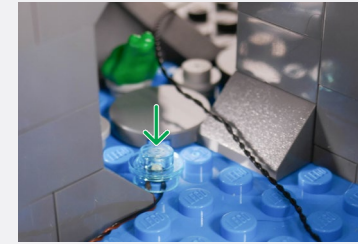


Blue 30cm Bit Light

Blue 30cm Bit Light



Round Plate 1x1 - Trans Light Blue

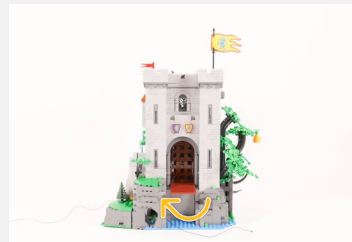
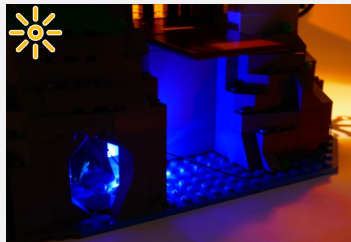
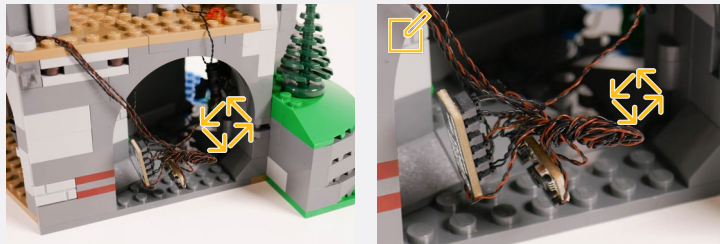


28

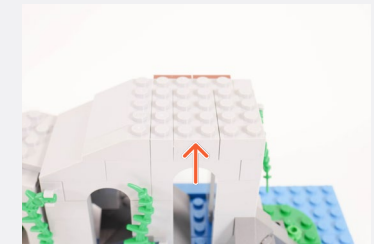
Legend → DISCONNECT → CONNECT / RECONNECT ↻ TURN / FLIP → DIRECTIONAL ↻ TWIST / BRAID * POWER ON TEST 📝 NOTE ICON

If you experience any issues with the lights not working and suspect an issue with a component, please try a different port on the expansion board to verify where the fault lies (with the light or expansion board). To correct any issues with expansion board ports, please view the section addressing expansion board issues in our troubleshooting section.

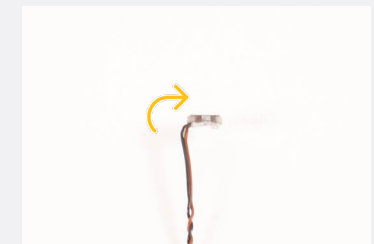
Exclude the 30cm Connecting Cable from twisting



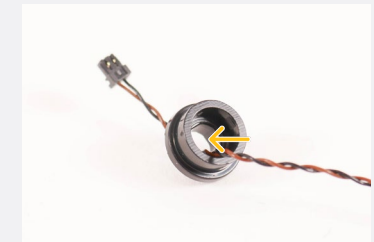
29



Warm White 30cm Large Bit Light



Black Round Plate 1x1 w/ Open Stud



Legend DISCONNECT CONNECT / RECONNECT TURN / FLIP DIRECTIONAL TWIST / BRAID POWER ON TEST NOTE ICON

| | |
|---|---|
| | <p>Black 1x1 Plate Modified Plate Rounded w/ Handle</p> |
| <p>Black 1x1 Tile w/ Clip Rounded Edges</p> | |
| | |
| | <p>Plate 1x2 MW Stud Jumper - Black</p> |

| | |
|--|--|
| | |
| | |
| | |
| | |

Legend

- DISCONNECT
- CONNECT / RECONNECT
- TURN / FLIP
- DIRECTIONAL
- TWIST / BRAID
- POWER ON TEST
- NOTE ICON

30

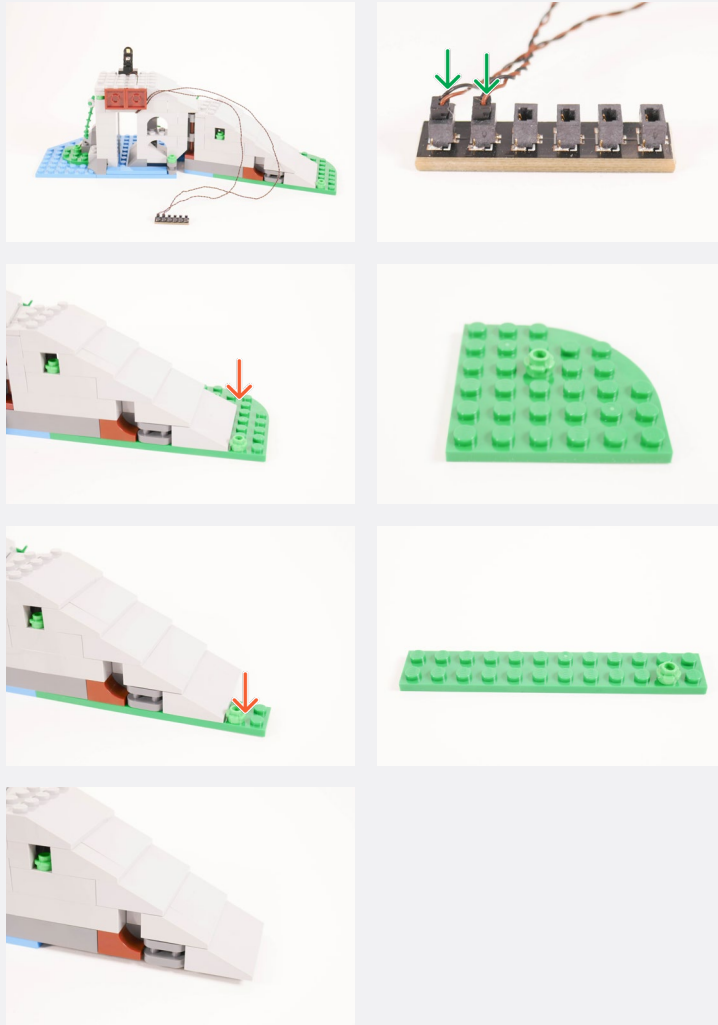
| | |
|--|---|
| | <p>Blue 30cm Bit Light</p> |
| | <p>Plate 2x2 W Rounded Bottom - Trans Clear</p> |
| | |
| | |

| | |
|--|-------------------------------|
| | |
| | |
| | |
| | <p>6-Port Expansion Board</p> |

Legend

- DISCONNECT
- CONNECT / RECONNECT
- TURN / FLIP
- DIRECTIONAL
- TWIST / BRAID
- POWER ON TEST
- NOTE ICON

31

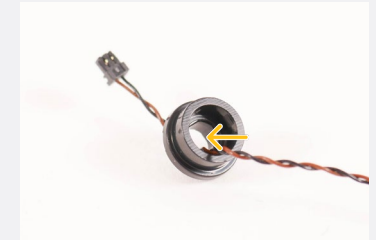


32

Warm White 30cm Large Bit Light



Black Round Plate 1x1 w/ Open Stud



Black 1x1 Plate Modified Plate Rounded w/ Handle

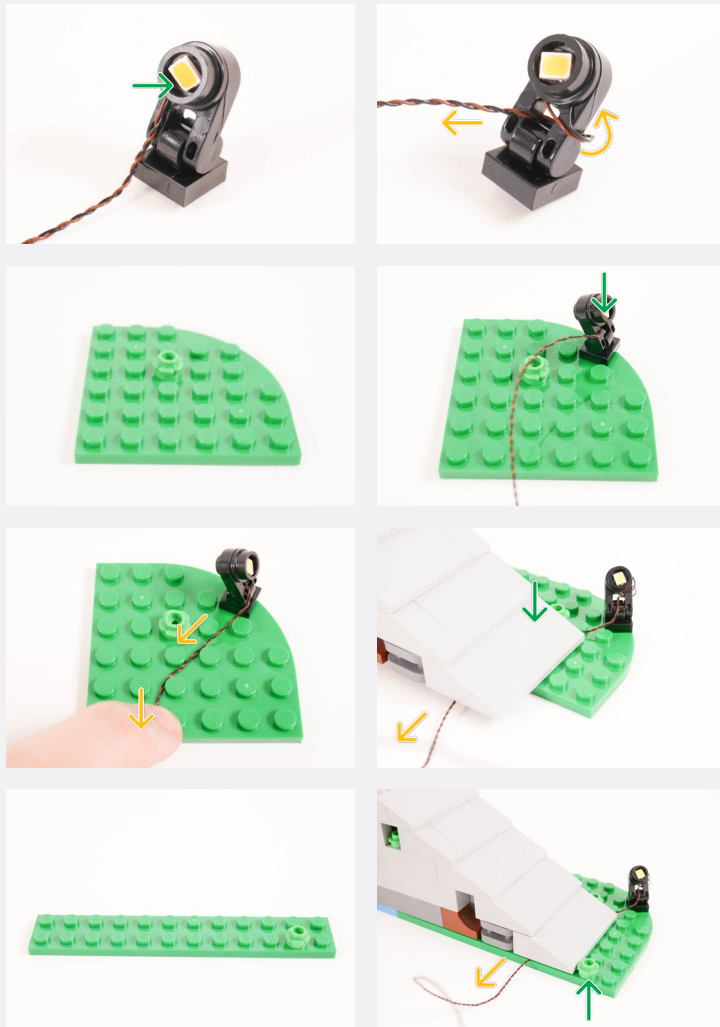


Black 1x1 Tile w/ Clip Rounded Edges



Legend

- DISCONNECT
- CONNECT / RECONNECT
- TURN / FLIP
- DIRECTIONAL
- TWIST / BRAID
- POWER ON TEST
- NOTE ICON



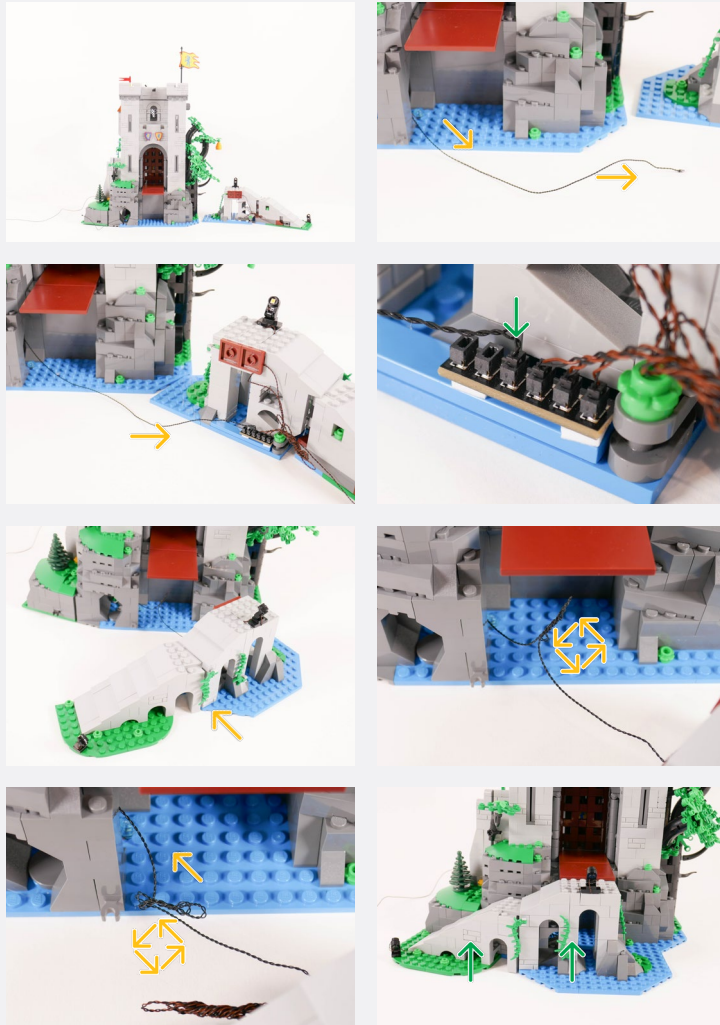
33



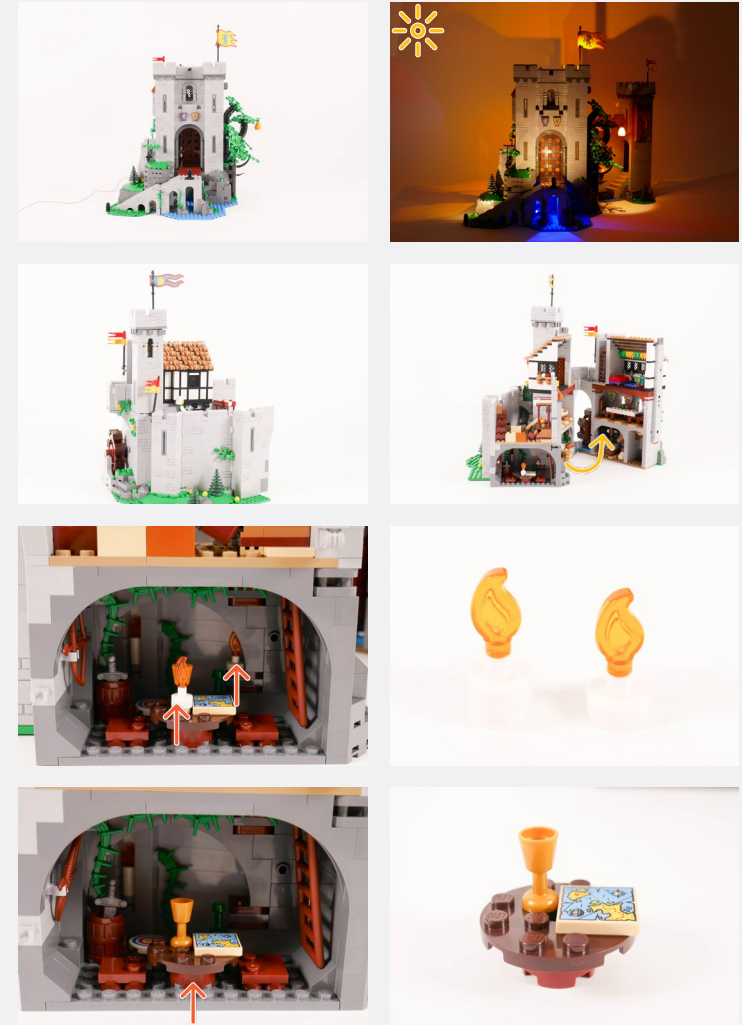
2x Adhesive Squares

Legend → DISCONNECT → CONNECT / RECONNECT ↻ TURN / FLIP → DIRECTIONAL ↻ TWIST / BRAID * POWER ON TEST 📝 NOTE ICON

If you experience any issues with the lights not working and suspect an issue with a component, please try a different port on the expansion board to verify where the fault lies (with the light or expansion board). To correct any issues with expansion board ports, please view the section addressing expansion board issues in our troubleshooting section.



34



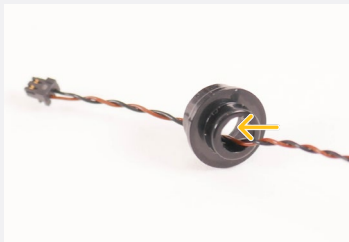
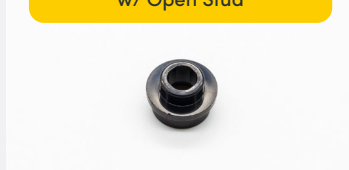
Legend
 DISCONNECT
 CONNECT / RECONNECT
 TURN / FLIP
 DIRECTIONAL
 TWIST / BRAID
 POWER ON TEST
 NOTE ICON



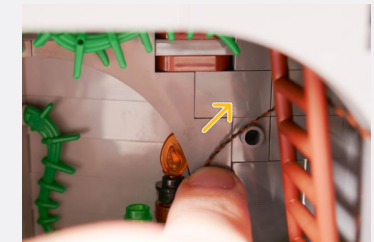
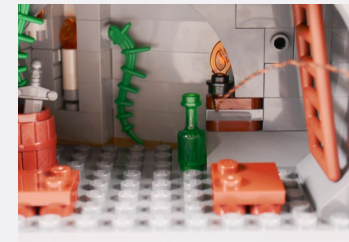
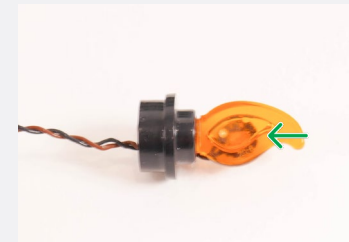
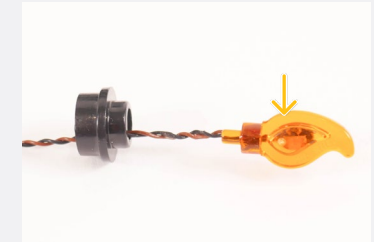
Orange 30cm Bit Light



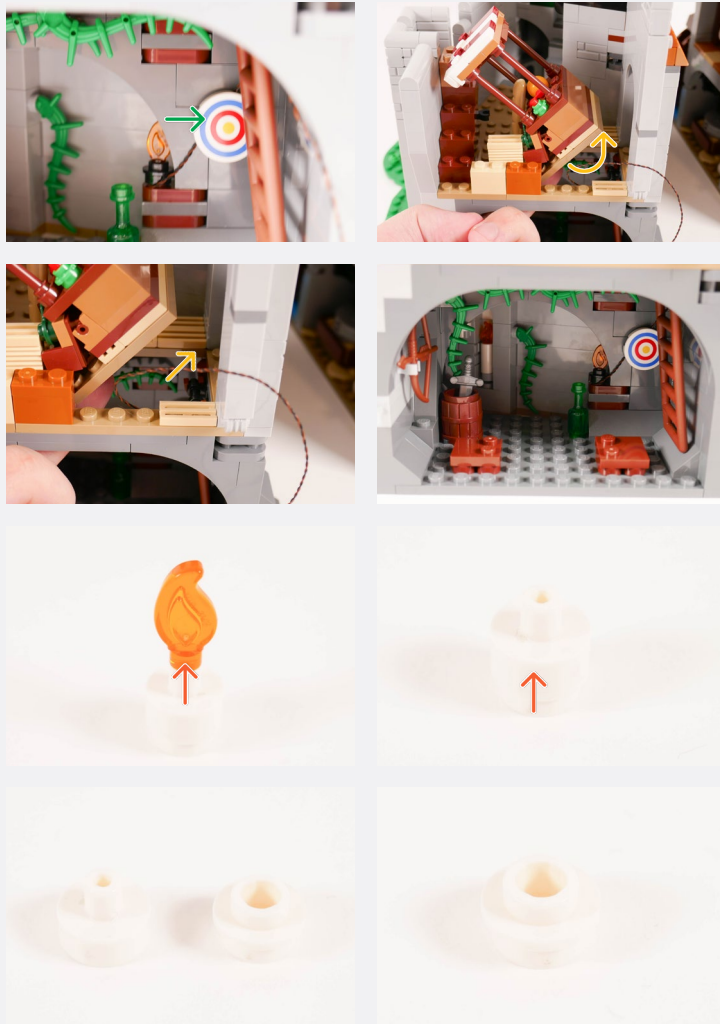
Black Round Plate 1x1 w/ Open Stud



35



Legend → DISCONNECT → CONNECT / RECONNECT ↻ TURN / FLIP → DIRECTIONAL ↻ TWIST / BRAID * POWER ON TEST 📝 NOTE ICON



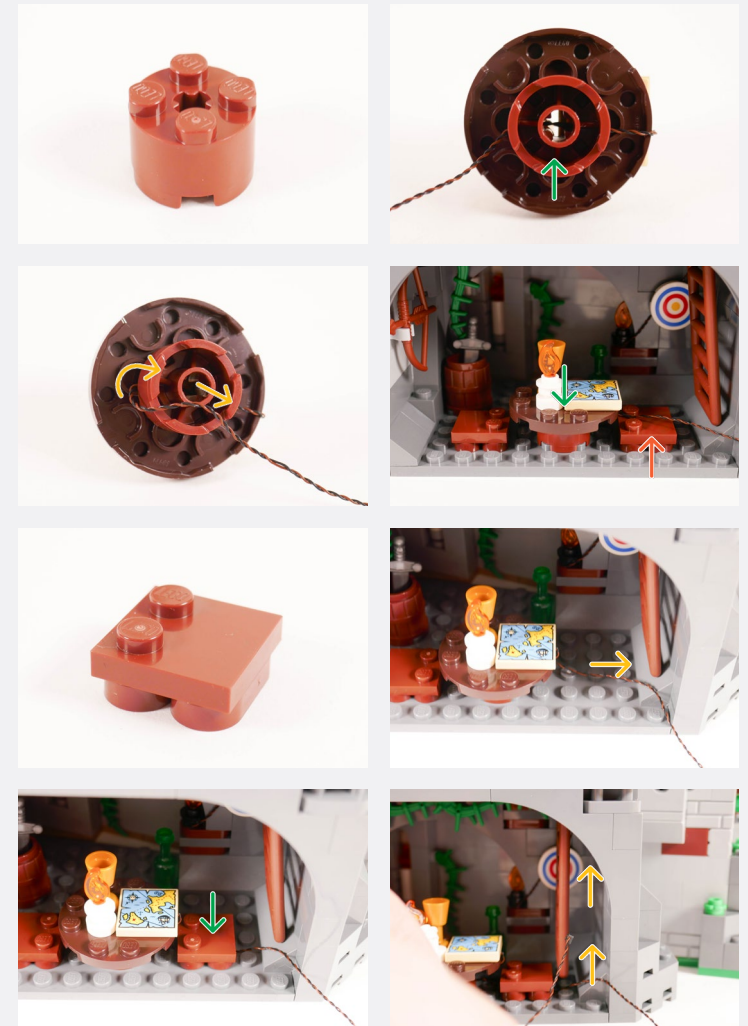
36



Legend

- DISCONNECT
- CONNECT / RECONNECT
- ↻ TURN / FLIP
- DIRECTIONAL
- ↻↻ TWIST / BRAID
- ✱ POWER ON TEST
- 📝 NOTE ICON

37



Legend → DISCONNECT → CONNECT / RECONNECT ↻ TURN / FLIP → DIRECTIONAL ↻ TWIST / BRAID ✨ POWER ON TEST 📝 NOTE ICON

38



39



Legend

- DISCONNECT
- CONNECT / RECONNECT
- TURN / FLIP
- DIRECTIONAL
- TWIST / BRAID
- POWER ON TEST
- NOTE ICON

40

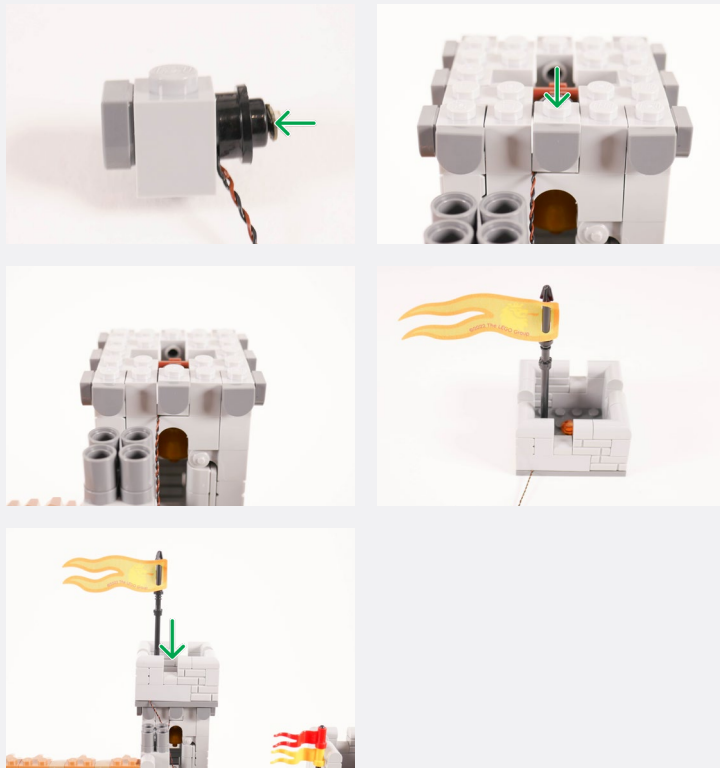
| | |
|--|---------------------------------------|
| | <p>Orange 30cm Large Bit Light</p> |
| | <p>Round Plate 1x1 - Trans Orange</p> |
| | |

| | |
|---|------------------------------|
| | |
| | <p>Orange 30cm Bit Light</p> |
| <p>Black Round Plate 1x1 w/ Open Stud</p> | |
| | |

Legend

- DISCONNECT
- CONNECT / RECONNECT
- TURN / FLIP
- DIRECTIONAL
- TWIST / BRAID
- POWER ON TEST
- NOTE ICON

41



Legend → DISCONNECT → CONNECT / RECONNECT ↻ TURN / FLIP → DIRECTIONAL ↻ TWIST / BRAID ✨ POWER ON TEST 📝 NOTE ICON

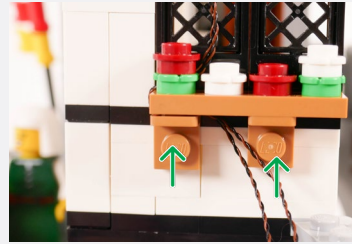
42



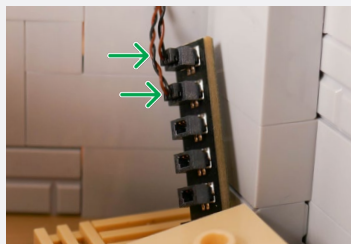
Legend



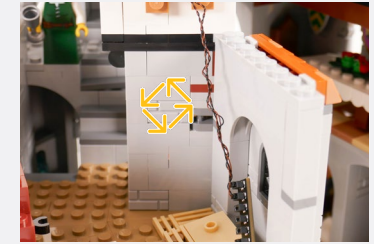
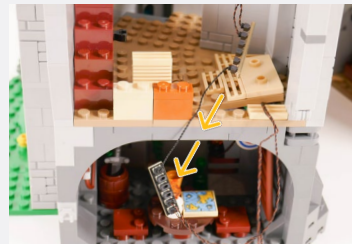
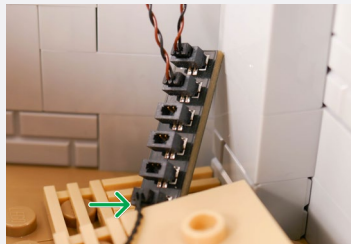
43



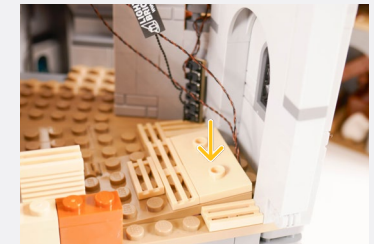
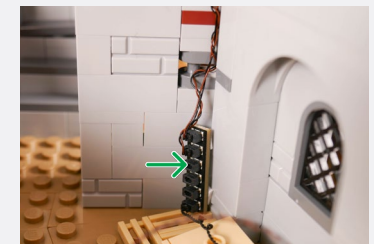
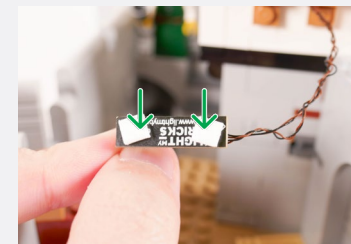
6-Port Expansion Board



5cm Connecting Cable



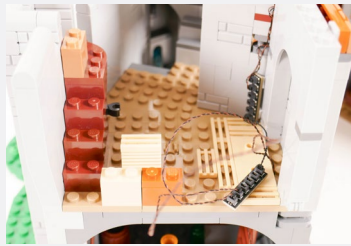
2x Adhesive Squares



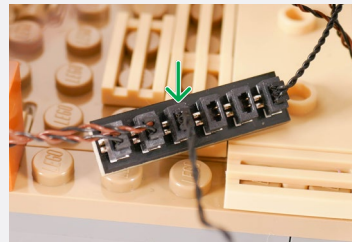
Legend



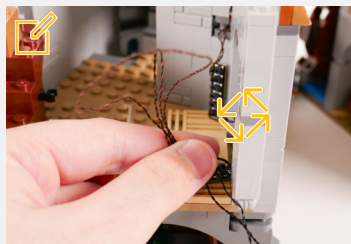
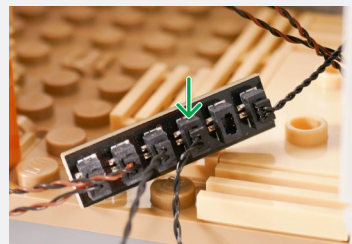
44



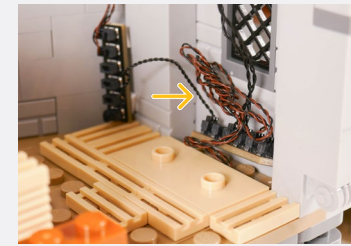
30cm Connecting Cable



50cm Connecting Cable



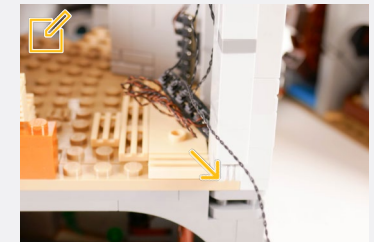
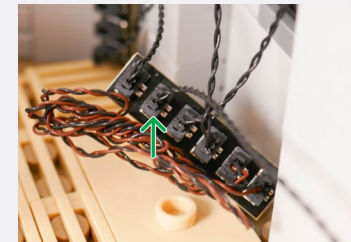
☑ Include the 30cm and 50cm Connecting Cables from twisting



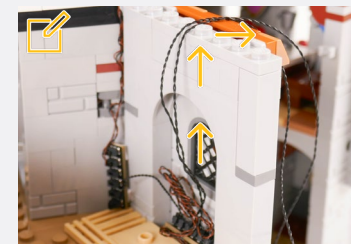
50cm Connecting Cable



☑ Pull one of the 50cm Connecting Cables out the side

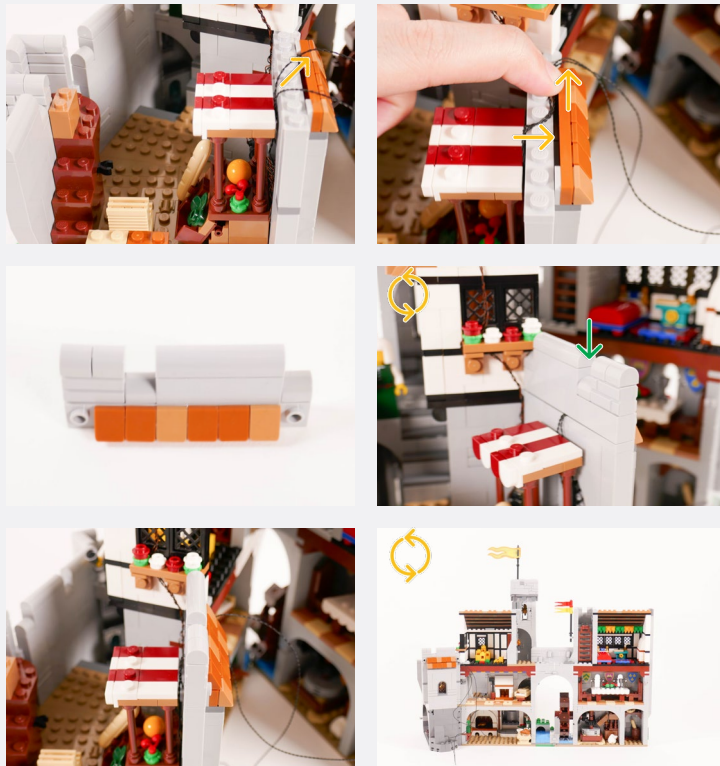


☑ Pull the 30cm and other 50cm Connecting Cable up the wall



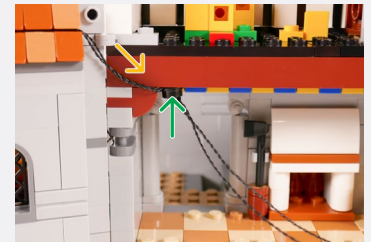
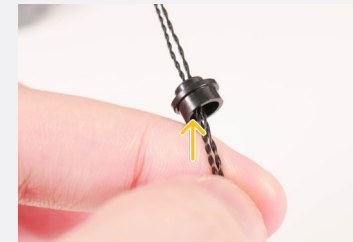
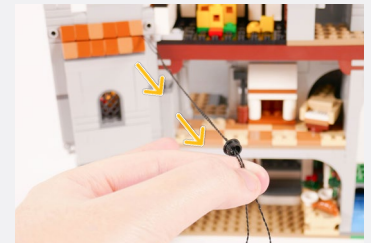
Legend

- DISCONNECT
- CONNECT / RECONNECT
- ↻ TURN / FLIP
- DIRECTIONAL
- ↻↻ TWIST / BRAID
- ✳ POWER ON TEST
- ☑ NOTE ICON

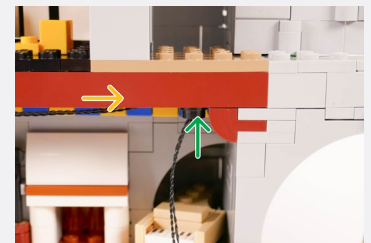


45

Black Round Plate 1x1 w/ Open Stud

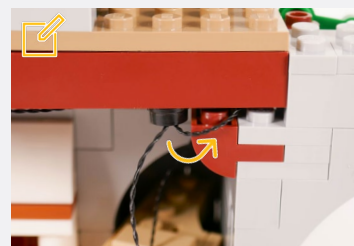
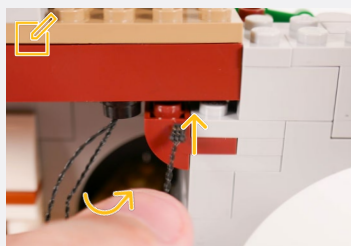
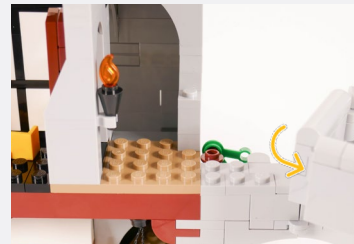


Black Round Plate 1x1 w/ Open Stud

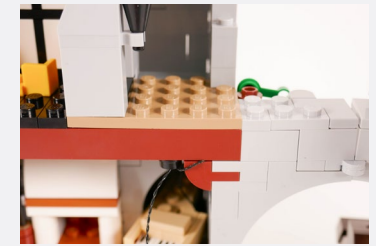


Legend → DISCONNECT → CONNECT / RECONNECT ↻ TURN / FLIP → DIRECTIONAL ↻ TWIST / BRAID * POWER ON TEST 📝 NOTE ICON

46

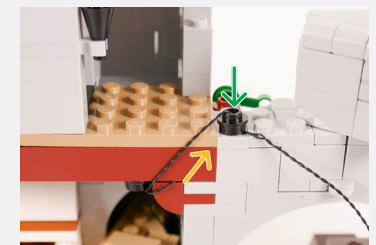
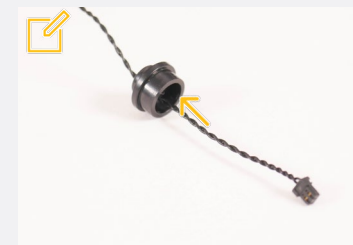


Thread the 30cm Connecting Cable inbetween the bricks



Thread the 50cm Connecting Cable through the Black Round Plate 1x1 w/ Open Stud

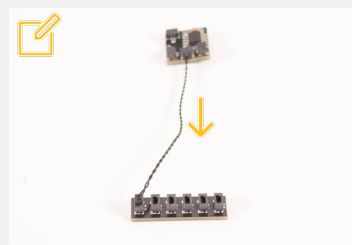
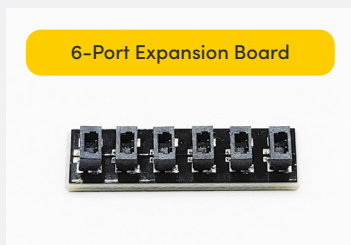
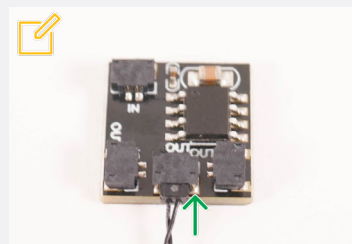
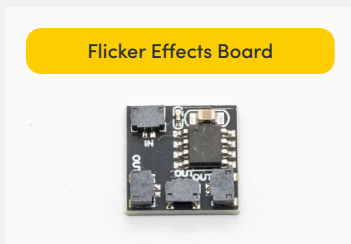
Black Round Plate 1x1 w/ Open Stud



Legend

- DISCONNECT
- CONNECT / RECONNECT
- TURN / FLIP
- DIRECTIONAL
- TWIST / BRAID
- POWER ON TEST
- NOTE ICON

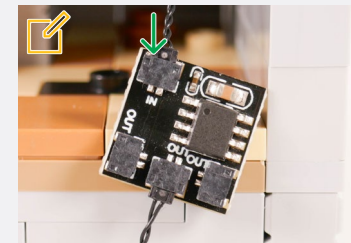
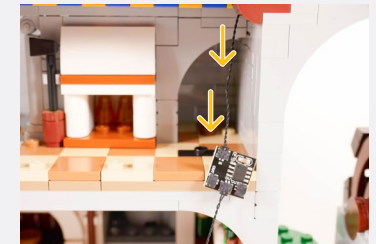
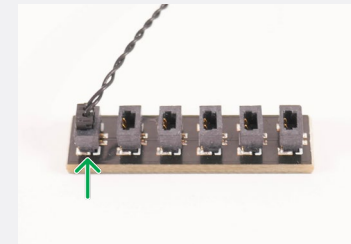
47



✂ Connect the 5cm Connecting Cable to the 'OUT' Port of the Flicker Effects Board

Connect the other end to the 6-Port Expansion Board







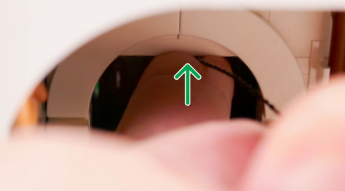

✂ Connect the 30cm Connecting Cable to the 'IN' Port of the Flicker Effects Board

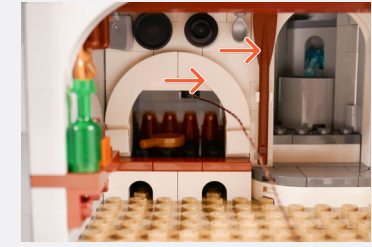


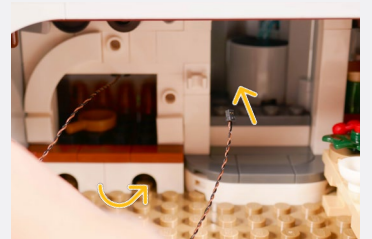
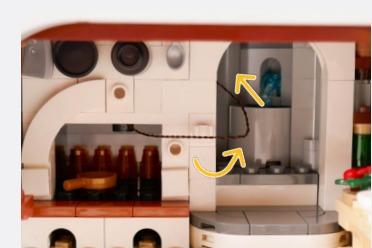
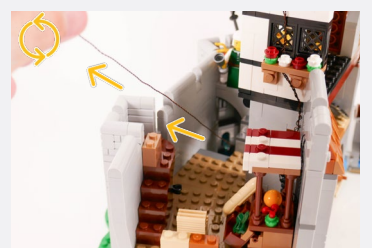

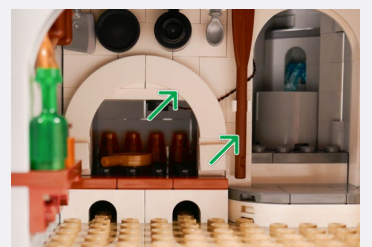


Legend

- DISCONNECT
- CONNECT / RECONNECT
- TURN / FLIP
- DIRECTIONAL
- TWIST / BRAID
- POWER ON TEST
- NOTE ICON

48

| | |
|---|--|
| <p>Orange 30cm Large Bit Light</p>  |  |
| <p>Black Round Plate 1x1 w/ Open Stud</p>  |  |
|  |  |
|  |  |

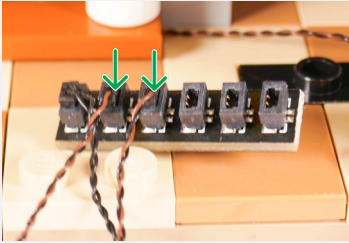
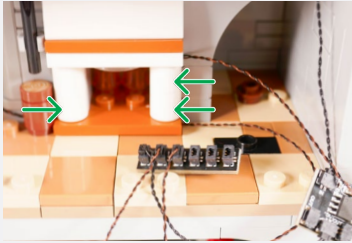
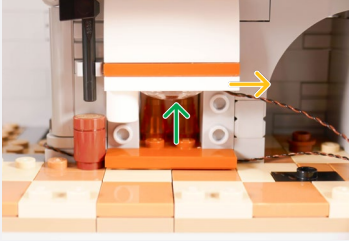
| | |
|---|---|
|  |  |
|  |  |
|  |  |
|  |  |

Legend

- DISCONNECT
- CONNECT / RECONNECT
- ↻ TURN / FLIP
- DIRECTIONAL
- ↔ TWIST / BRAID
- ✳ POWER ON TEST
- 📝 NOTE ICON

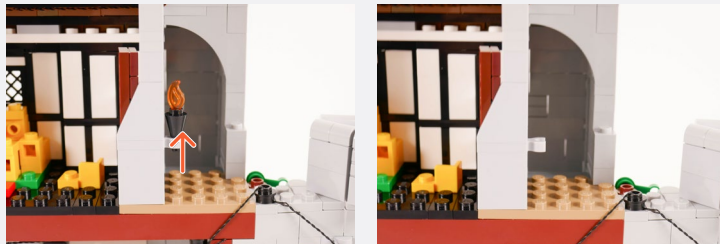


49



Legend → DISCONNECT → CONNECT / RECONNECT ↻ TURN / FLIP → DIRECTIONAL ↻ TWIST / BRAID * POWER ON TEST 📝 NOTE ICON

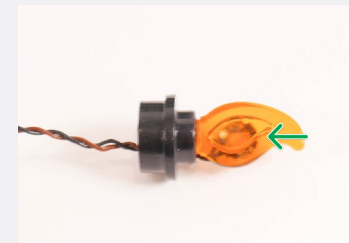
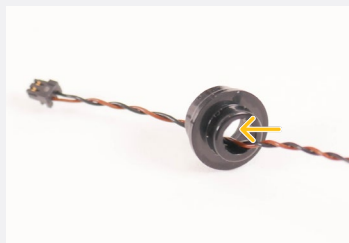
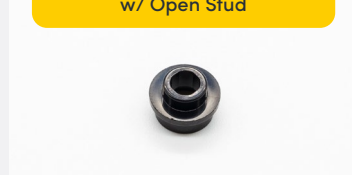
50



Orange 30cm Bit Light



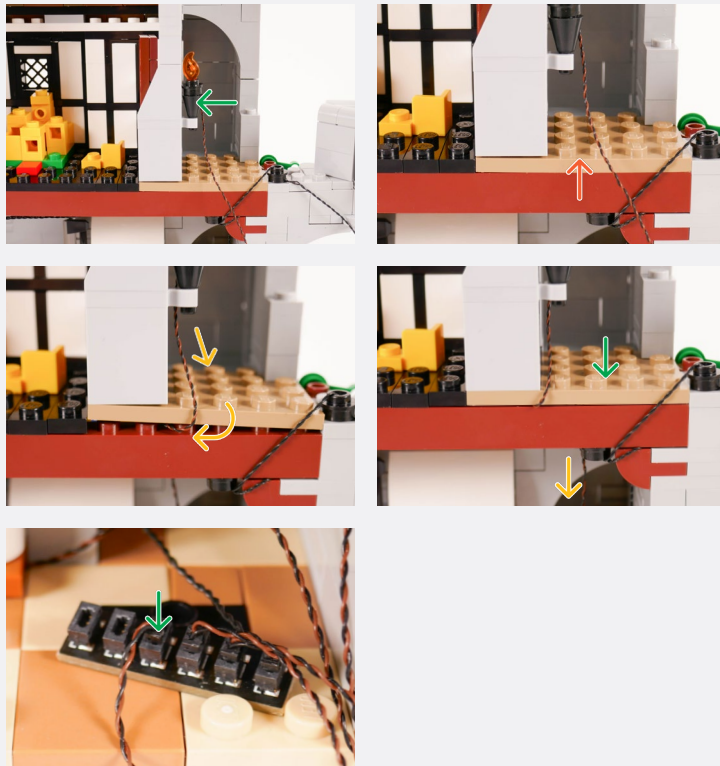
Black Round Plate 1x1 w/ Open Stud



Legend

- DISCONNECT
- CONNECT / RECONNECT
- TURN / FLIP
- DIRECTIONAL
- TWIST / BRAID
- POWER ON TEST
- NOTE ICON

51

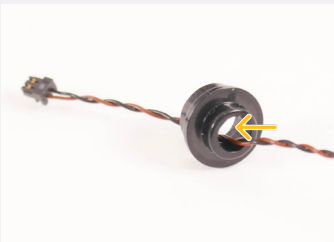


52

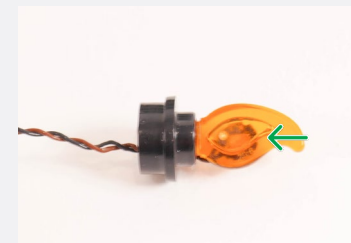
Orange 30cm Bit Light



Black Round Plate 1x1 w/ Open Stud



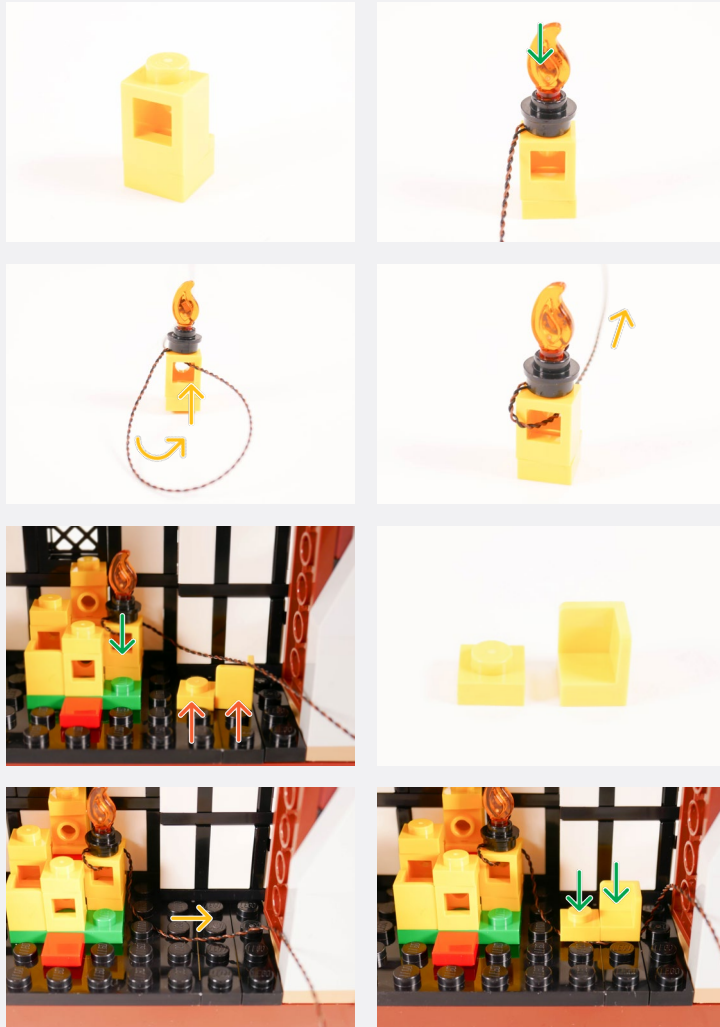
Candle Flame



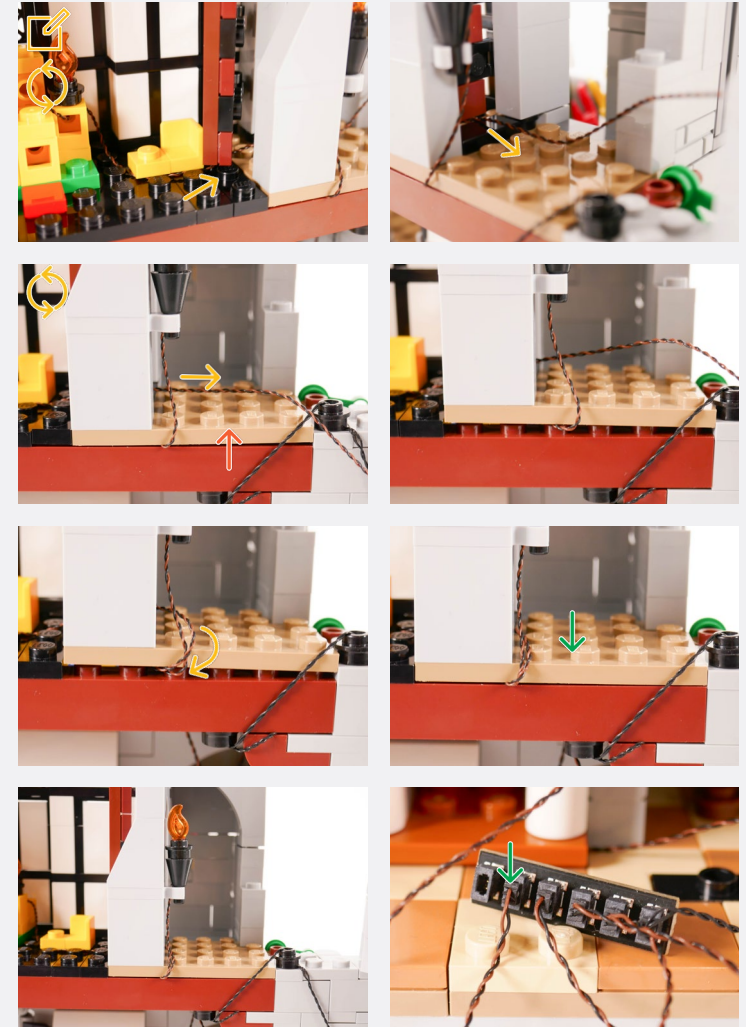
Legend

- DISCONNECT
- CONNECT / RECONNECT
- TURN / FLIP
- DIRECTIONAL
- TWIST / BRAID
- POWER ON TEST
- NOTE ICON

53



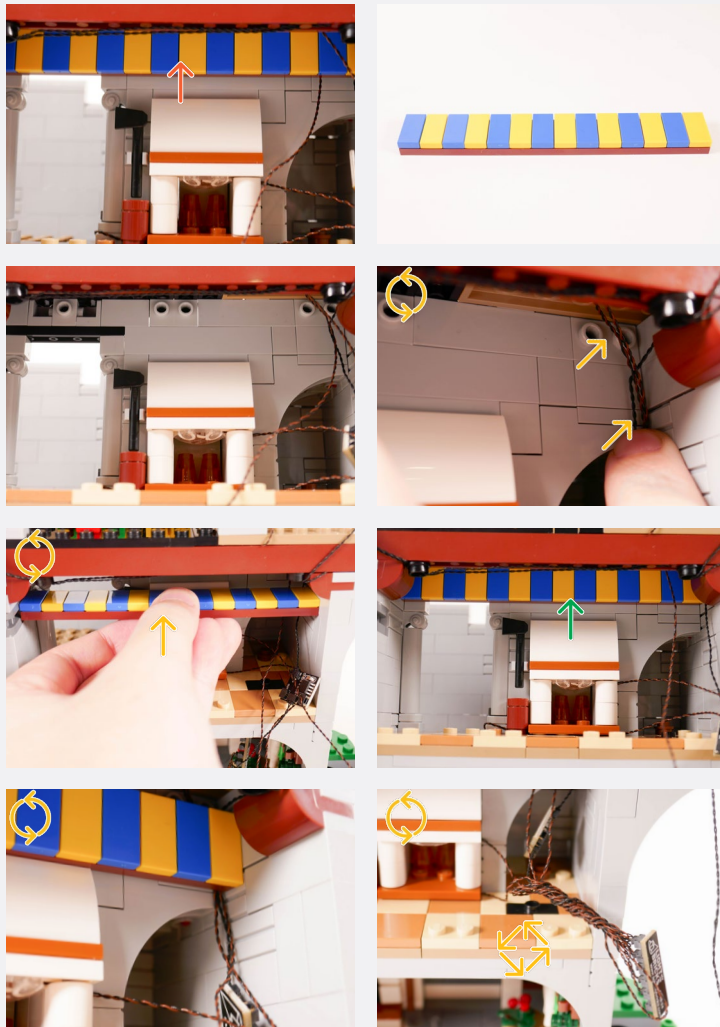
Thread the cable beneath the door



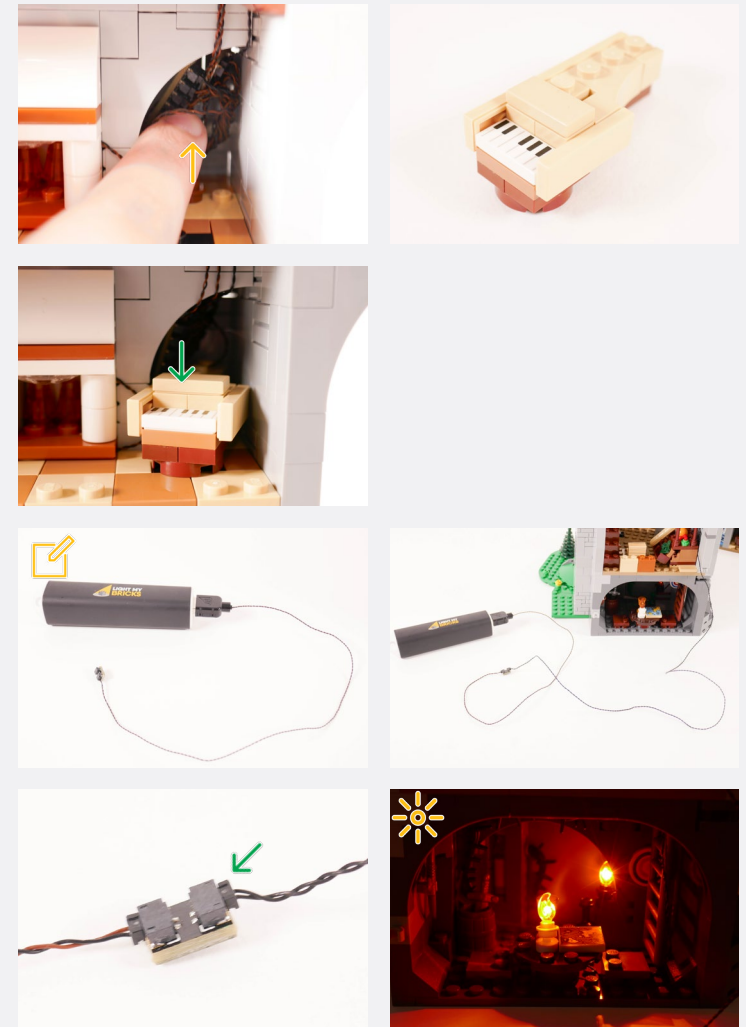
Legend

- DISCONNECT
- CONNECT / RECONNECT
- ↻ TURN / FLIP
- DIRECTIONAL
- ↻↻ TWIST / BRAID
- ✳ POWER ON TEST
- 📌 NOTE ICON

If you experience any issues with the lights not working and suspect an issue with a component, please try a different port on the expansion board to verify where the fault lies (with the light or expansion board). To correct any issues with expansion board ports, please view the section addressing expansion board issues in our troubleshooting section.

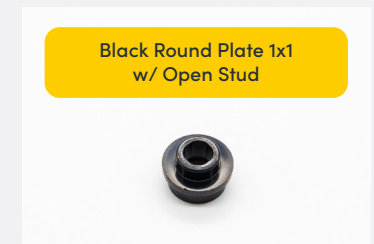
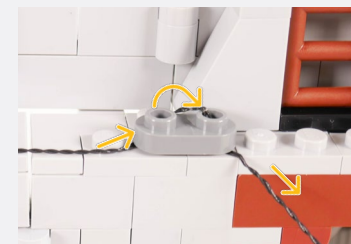
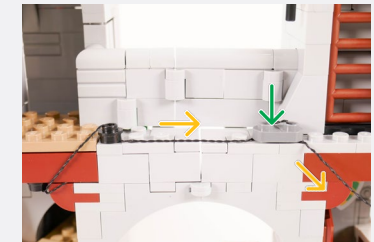
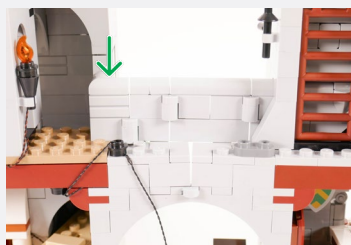
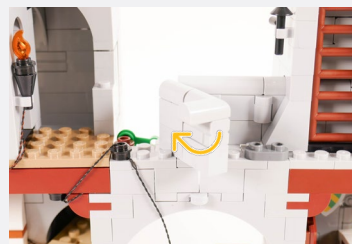
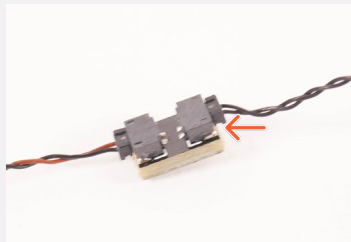
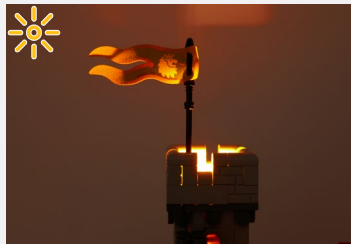
54

55

Take a spare Expansion Board with a Power Source and connect it to the 50cm Connecting Cable to test the lights


Legend

- DISCONNECT
- CONNECT / RECONNECT
- TURN / FLIP
- DIRECTIONAL
- TWIST / BRAID
- POWER ON TEST
- NOTE ICON

If you experience any issues with the lights not working and suspect an issue with a component, please try a different port on the expansion board to verify where the fault lies (with the light or expansion board). To correct any issues with expansion board ports, please view the section addressing expansion board issues in our troubleshooting section.

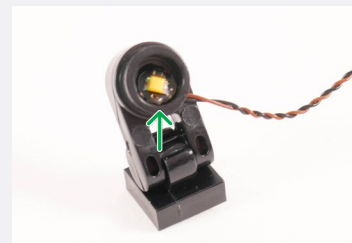
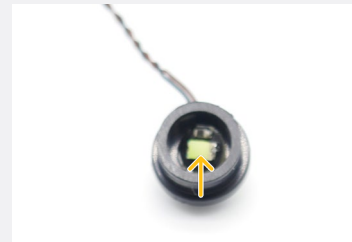
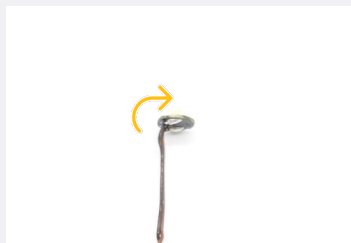
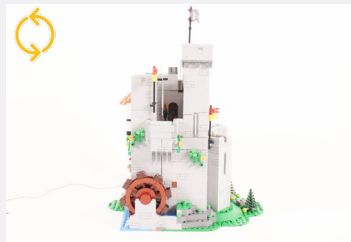


56

Legend

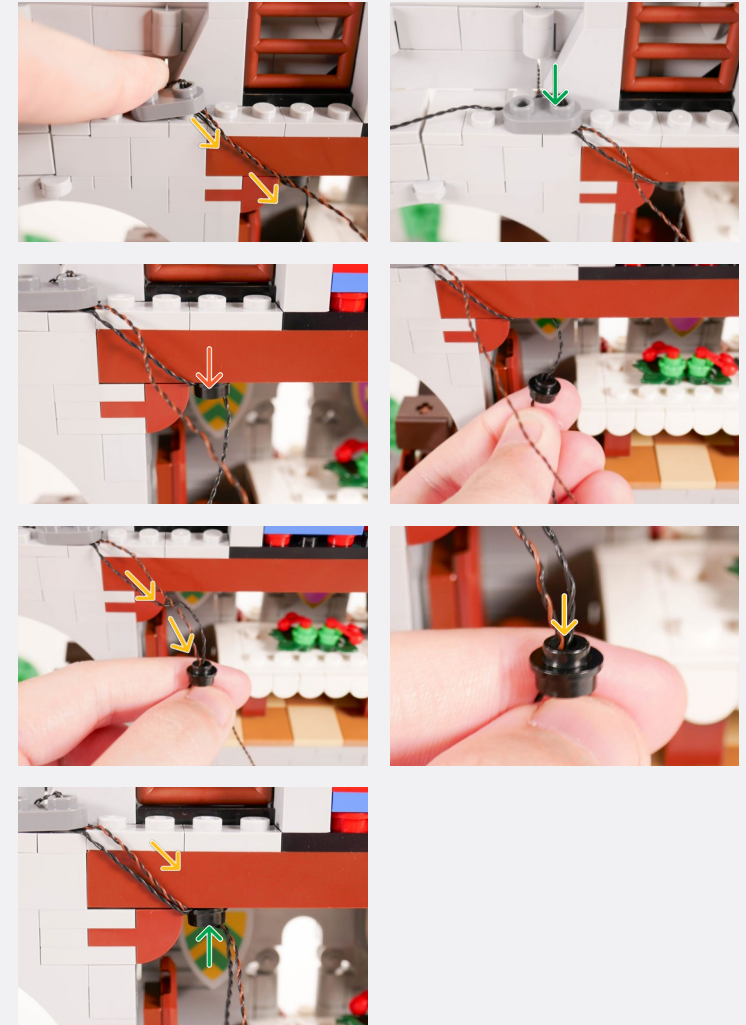


57



Legend → DISCONNECT → CONNECT / RECONNECT ↻ TURN / FLIP → DIRECTIONAL ↻ TWIST / BRAID ✨ POWER ON TEST 📝 NOTE ICON

58

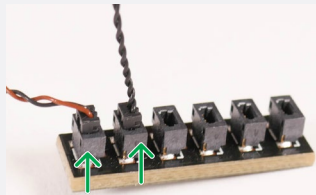
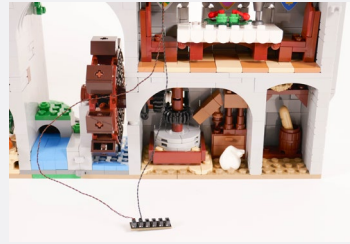


Legend



59

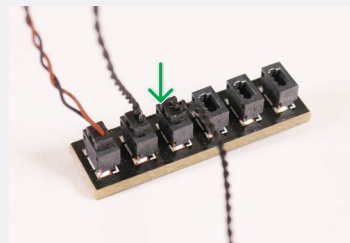
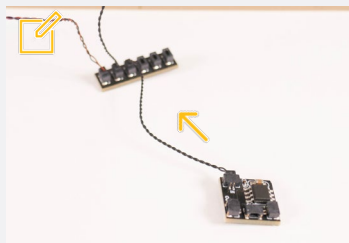
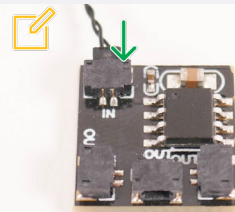
6-Port Expansion Board



5cm Connecting Cable



Flicker Effects Board



✂ Connect the 5cm Connecting Cable to the 'IN' Port of the Flicker Effects Board

Connect the other end to the 6-Port Expansion Board

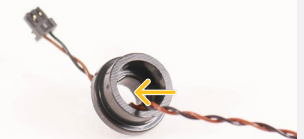
60



Orange 30cm Large Bit Light



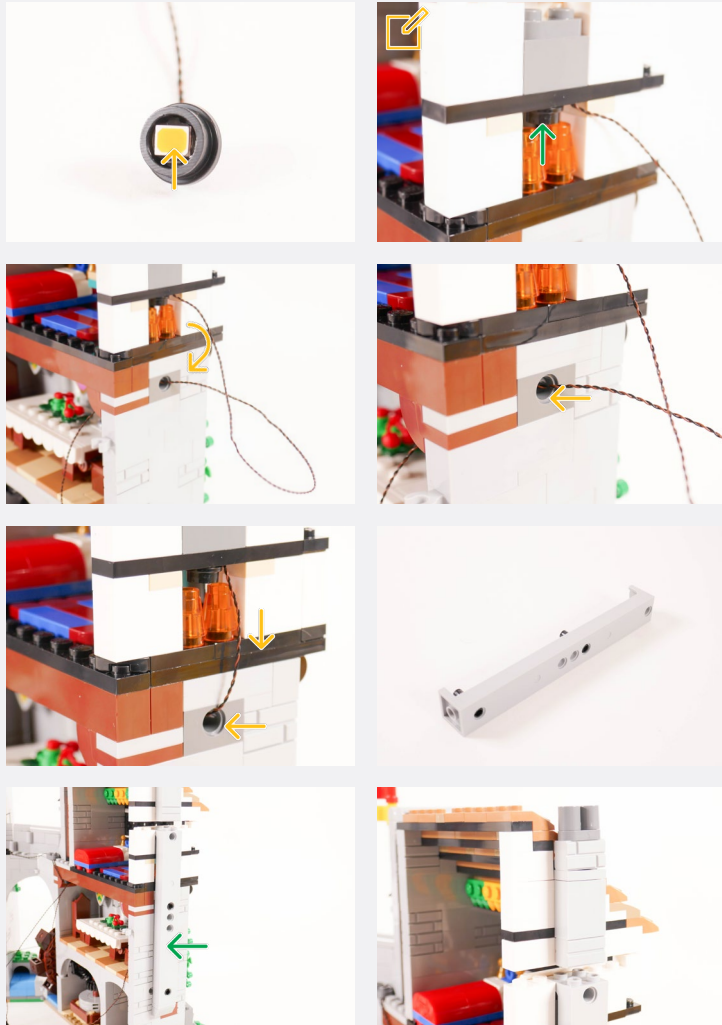
Black Round Plate 1x1 w/ Open Stud



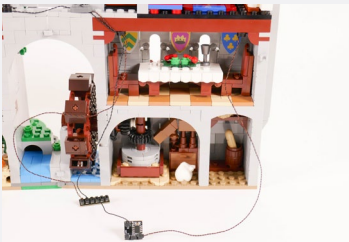
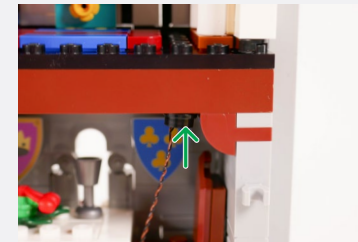
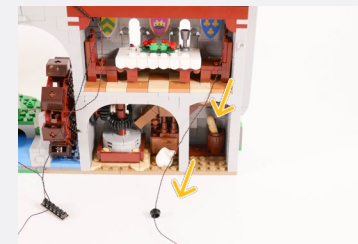
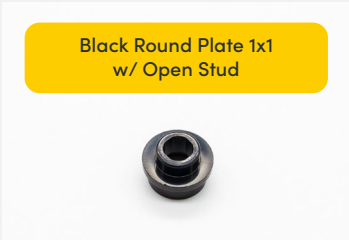
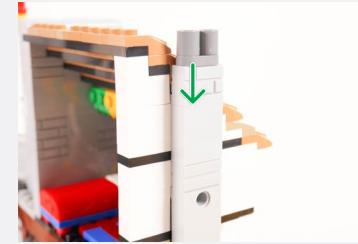
Legend

- DISCONNECT
- CONNECT / RECONNECT
- TURN / FLIP
- DIRECTIONAL
- TWIST / BRAID
- POWER ON TEST
- NOTE ICON

You may need to remove the surrounding section or orange cones to connect the piece

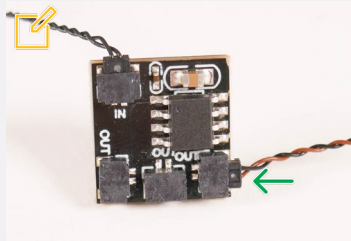


61



Legend DISCONNECT CONNECT / RECONNECT TURN / FLIP DIRECTIONAL TWIST / BRAID POWER ON TEST NOTE ICON

✂ Connect the Orange 30cm Large Bit Light to the 'OUT' Port of the Flicker Effects Board

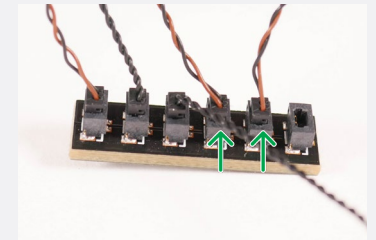
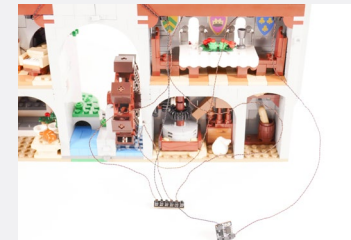


62

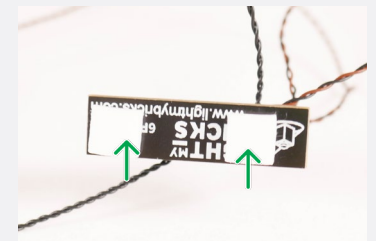
Yellow 30cm Bit Light



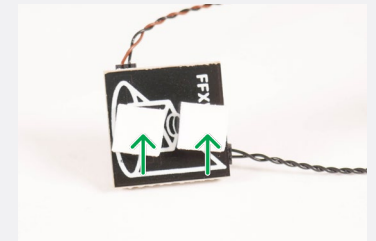
Black Round Plate 1x1 w/ Open Stud



2x Adhesive Squares



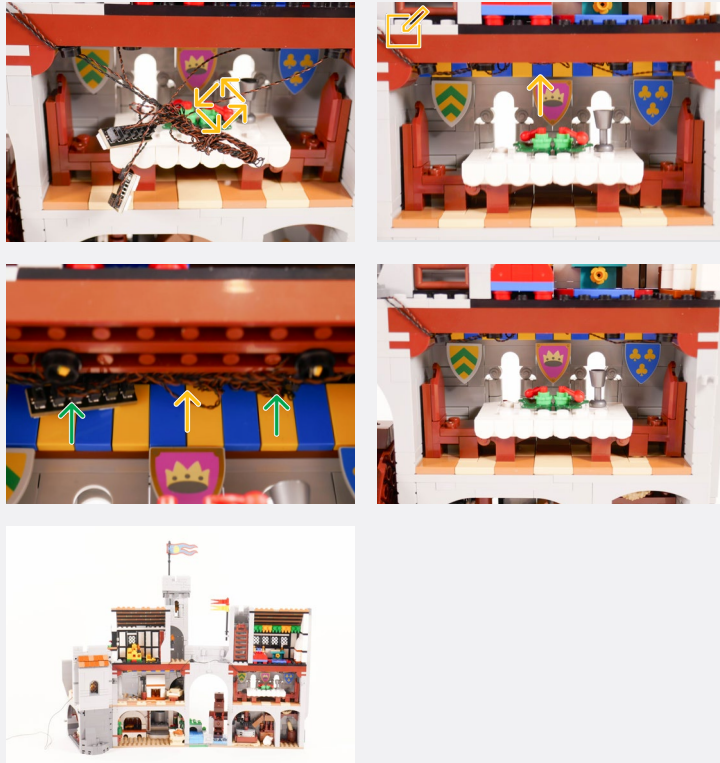
2x Adhesive Squares



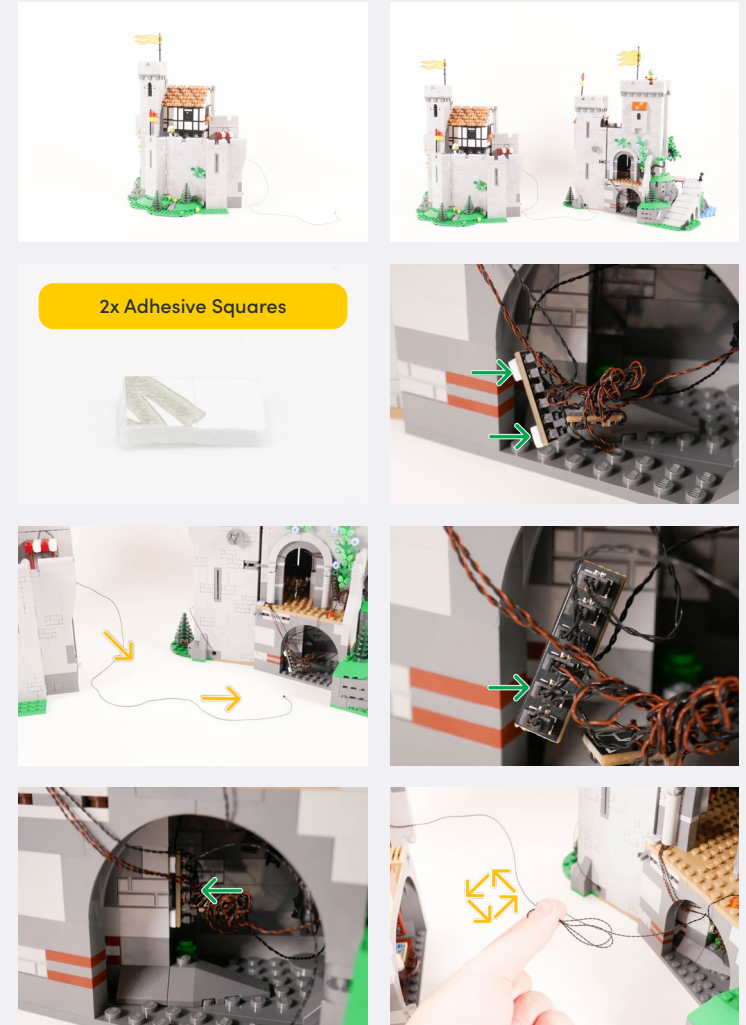
Legend

- DISCONNECT
- CONNECT / RECONNECT
- TURN / FLIP
- DIRECTIONAL
- TWIST / BRAID
- POWER ON TEST
- NOTE ICON

Hide the Cables and Boards above where the ceiling is



63

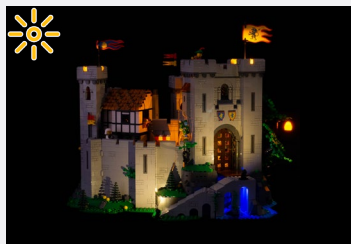


2x Adhesive Squares

Legend

- DISCONNECT
- CONNECT / RECONNECT
- TURN / FLIP
- DIRECTIONAL
- TWIST / BRAID
- POWER ON TEST
- NOTE ICON

If you experience any issues with the lights not working and suspect an issue with a component, please try a different port on the expansion board to verify where the fault lies (with the light or expansion board). To correct any issues with expansion board ports, please view the section addressing expansion board issues in our troubleshooting section.



Connect the other end to a 5V USB Power Bank, 5V USB Wall Adaptor, or USB to AA Battery Pack (sold separately)

Legend DISCONNECT CONNECT / RECONNECT TURN / FLIP DIRECTIONAL TWIST / BRAID POWER ON TEST NOTE ICON

FINAL PRODUCT

This finally completes installation of the Light My Bricks
LEGO Lion Knights' Castle 10305 Light Kit.





TROUBLESHOOTING

Light My Bricks lighting kits contain individual components that are very small and can be easily damaged if not handled correctly.

To prevent unnecessary damage to components, we highly recommend that the User Guide section, **“Important things to note”** is read carefully. Follow the handling procedures in the User Guide to help prevent faults and damages to your Light My Bricks components.

If you are experiencing issues with your Light My Bricks set, watch our troubleshooting video or read on for a list of common causes to help you troubleshoot.

Troubleshooting

Firstly, ensure that the batteries have power using a battery charge gauge.

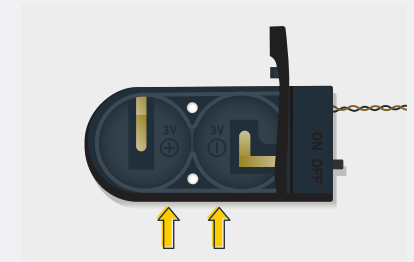
If the batteries have no power, replace the batteries.

If the batteries still have power, check to see if the batteries have been inserted correctly into the battery pack.

Check For CR2032 Batteries Using The Flat Battery Pack

Inside the battery pack is a symbol indicating which side the (round) CR2032 battery should be inserted. Check that the "+" side of the battery pack has the battery with the "+" symbol facing downwards.

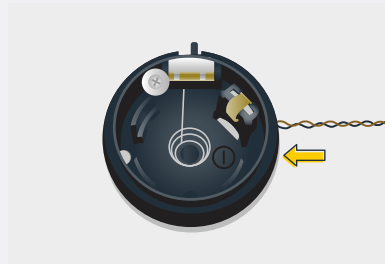
On the opposite side, the "-" side of the battery pack should have the battery flipped upside down, that is the "+" symbol facing upwards.



Troubleshooting

Check For Cr2032 Batteries Using The Round Battery Pack

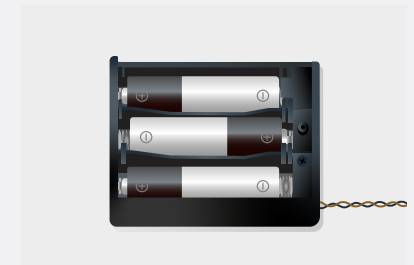
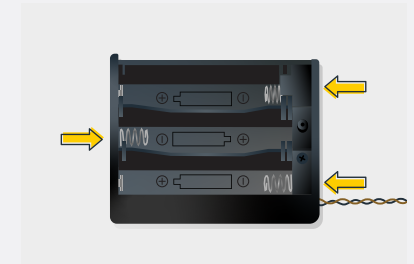
Inside the battery pack is a symbol indicating which side the (round) CR2032 battery should be inserted. In this case, for the stacked battery pack, ensure that BOTH batteries have the "+" symbol facing upwards.



Check for AA batteries using the AA battery pack

Inside the battery pack are symbols indicating which direction the AA battery should be inserted. The flat side of the battery should be paired with the spring side of the battery pack.

If the batteries have been installed correctly and your kit still isn't operating correctly, the next step is to check the wiring.



Troubleshooting

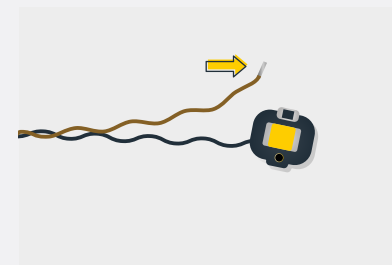
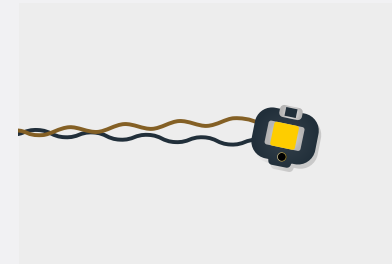
Check Your Wires

In order for Light My Bricks components to fit in between and underneath LEGO® bricks, the components need to be very small. Due to this nature, Light My Bricks components can be easily damaged when not handled correctly.

Be careful when removing unpacked components out of the packaging and ensure not to forcibly pull at the wires as this can damage the soldering that attach the wires to the LEDs.

If the wiring is detached from the LED itself, the light will not operate.

When connecting lights to your LEGO set, check that there are no pinched wires underneath or in between bricks and plates. When the wires are pinched and the exposed wires are touching each other, this can cause a crosswire and the lights to not function correctly.



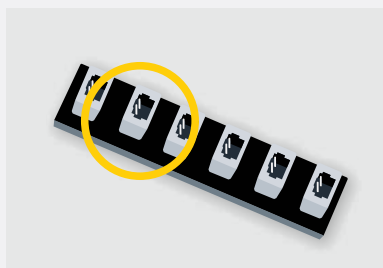
Troubleshooting

Check Your Expansion Board Ports/ Strip Light Ports / Effects Board Ports

It is important to note that connectors can only be inserted to the expansion board, strip light, or effects board ports in one direction.

Forcibly inserting connectors in the incorrect direction will result in damaging the pins inside each of the ports on your component board.

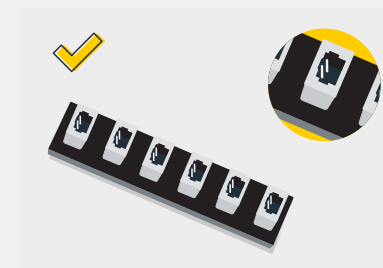
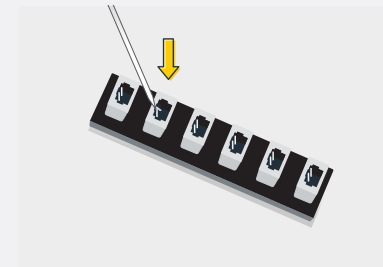
Not only will a light connected to the damaged port not work, but if the pins inside the port are bent to a point they are touching each other, this can result in all other lights in the system to stop working. This is a short circuit.



A short circuit can also result in overheating of the board, cable or batteries. If you suspect a short circuit, **DISCONNECT POWER IMMEDIATELY**. Batteries can fail, catch fire, or even explode if left connected to a short circuit for too long.

If you suspect you have a faulty component due to a bent pin, try the following steps:

If you look carefully inside each of the ports, each port contains 2 small pins that should be straight. You will be able to identify a faulty port if it has any bent pins.





CONTACT US

If you have an enquiry regarding the online shop, our products or a general enquiry please refer to our Frequently Asked Questions webpage.

Alternatively, you can contact our Customer Services team by visiting our online support portal.

support.lightmybricks.com

We thank you for purchasing this product and hope you enjoy!



lightmybricks.com